

REVIEW AND COMPLIANCE

STATE/ACT 250

Project Name RANDOLPH ELEM. SCHOOL
Town RANDOLPH County ORANGE
Project # DED DHP # OR90-005 Map #
Photo I.D. Sheet
Contact Person/Phone Number Ed RYAN - 2756
Barwell White Arnold & Hembrough, Inc.
Known Archeological Sites: the white 603-643-3772

Standing Buildings or Structures (give name/ID #, property type, etc.):

Listed on Vermont Historic Sites & Structure Survey, State Register, or
National Register (identify source and # of buildings/structures):

Eligible for State or National Register (identify source and # of buildings-
structures):

Comments:

Reviewed by
(Initial/Date)

RLM 4-5-90 S.O.

DCS 5-29-90; S.O. ~~there~~ no drainage or other
archeologically sensitive areas will be
impacted by project or currently proposed.

BANWELL WHITE ARNOLD HEMBERGER & PARTNERS, INC.

A R C H I T E C T S

2 WEST WHELOCK STREET • HANOVER • NEW HAMPSHIRE 03755-1795
RR #2 BOX 142 • MECHANIC STREET • NORWICH • VERMONT 05055

C. Treat Arnold	AIA
Roy W. Banwell	AIA
Jules J. Chatot, Jr.	AIA
Gregory Hemberger	AIA
David Laurin	AIA
George W. Turner	AIA
C. Stuart White, Jr.	AIA

RECEIVED MAY - 2 1990

Charles T. Arnold, Jr.	
Margaret E. Deslaurier	
Carol J. De Tine	AIA
Donald J. Longwell	AIA
Susan E. Reed	AIA
Mary Lou A. Willing	
Karl E. Winchester	AIA

April 30, 1990

Ms. Sue Jamele
Division for Historic Preservation
58 East State Street
Montpelier, VT 05602

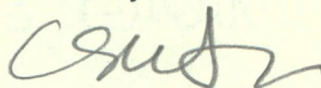
RE: Randolph Elementary School

Dear Ms. Jamele:

Enclosed is a location map for the Randolph School. We apologize for the delay, it took a while to find our Gazetteer.

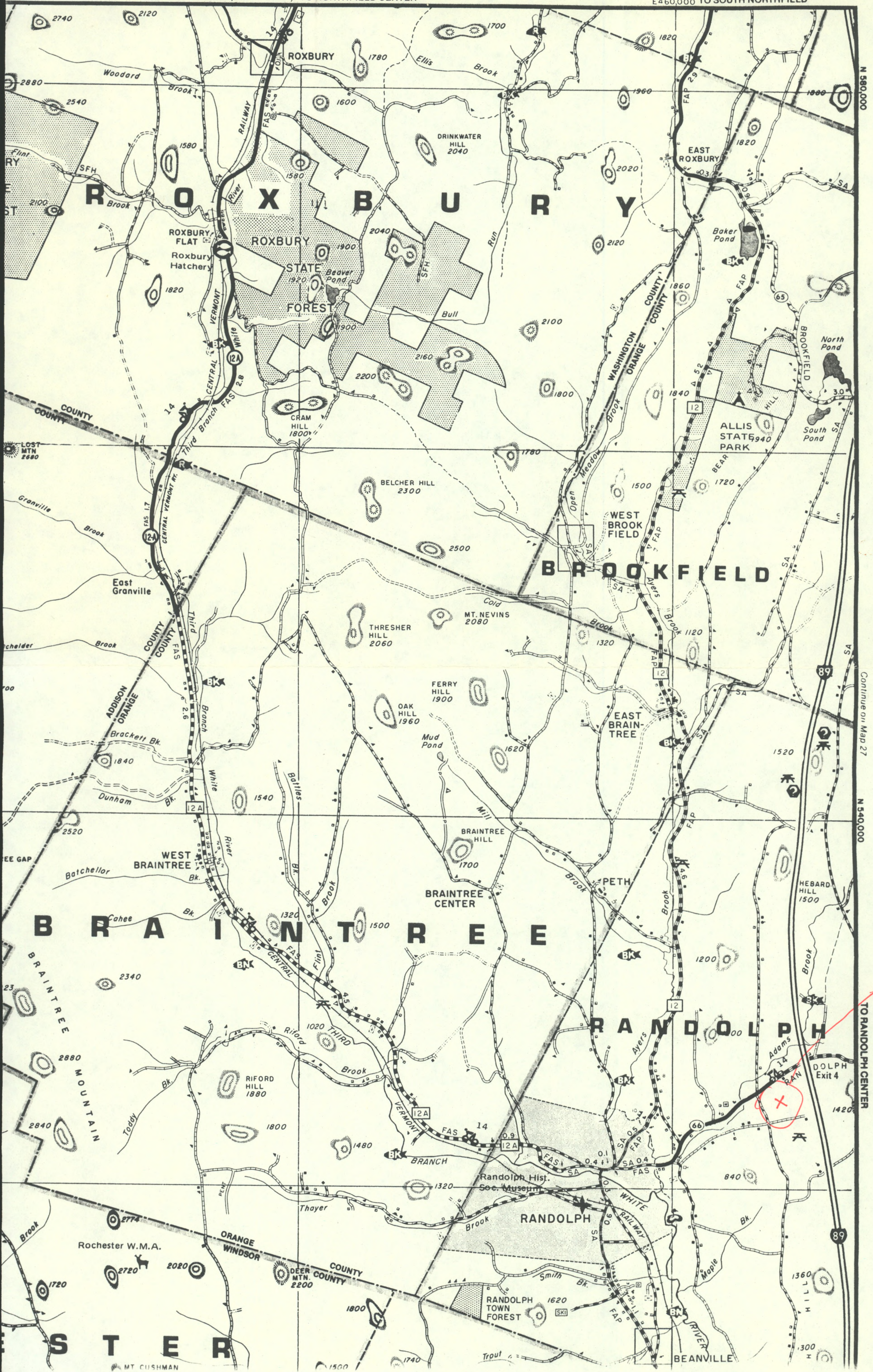
Please let us know if we can be of further assistance.

Sincerely,



C. Stuart White, Jr., AIA

CSWjr/med
Enclosure



N 580,000

Continue on Map 27

N 540,000

TO RANDOLPH CENTER

SCHOOL SITE



STATE OF VERMONT
AGENCY OF DEVELOPMENT AND COMMUNITY AFFAIRS

DIVISION FOR HISTORIC PRESERVATION

Preserving Vermont's historic, architectural and archeological resources

May 30, 1990

Frederick Matuszewski
Corzilius, Matuszewski, Krause Architects
603 Beech Street
Manchester, New Hampshire 03104

Re: Proposed Schools for Quechee and Wilder. Dept. of
Education.

Dear Mr. Matuszewski:

Thank you for the opportunity to comment on the above-referenced project.

The Division for Historic Preservation has reviewed this undertaking for the purposes of 22 V.S.A. 14, the Vermont Historic Preservation Act. Project review consists of identifying the project's potential impacts to historic buildings, structures, historic districts, historic landscapes and settings, and to known or potential archeological resources.

The proposed project will not affect any properties of historic, architectural or archeological significance that are listed on or eligible for inclusion in the State or National Registers of Historic Places.

Sincerely,

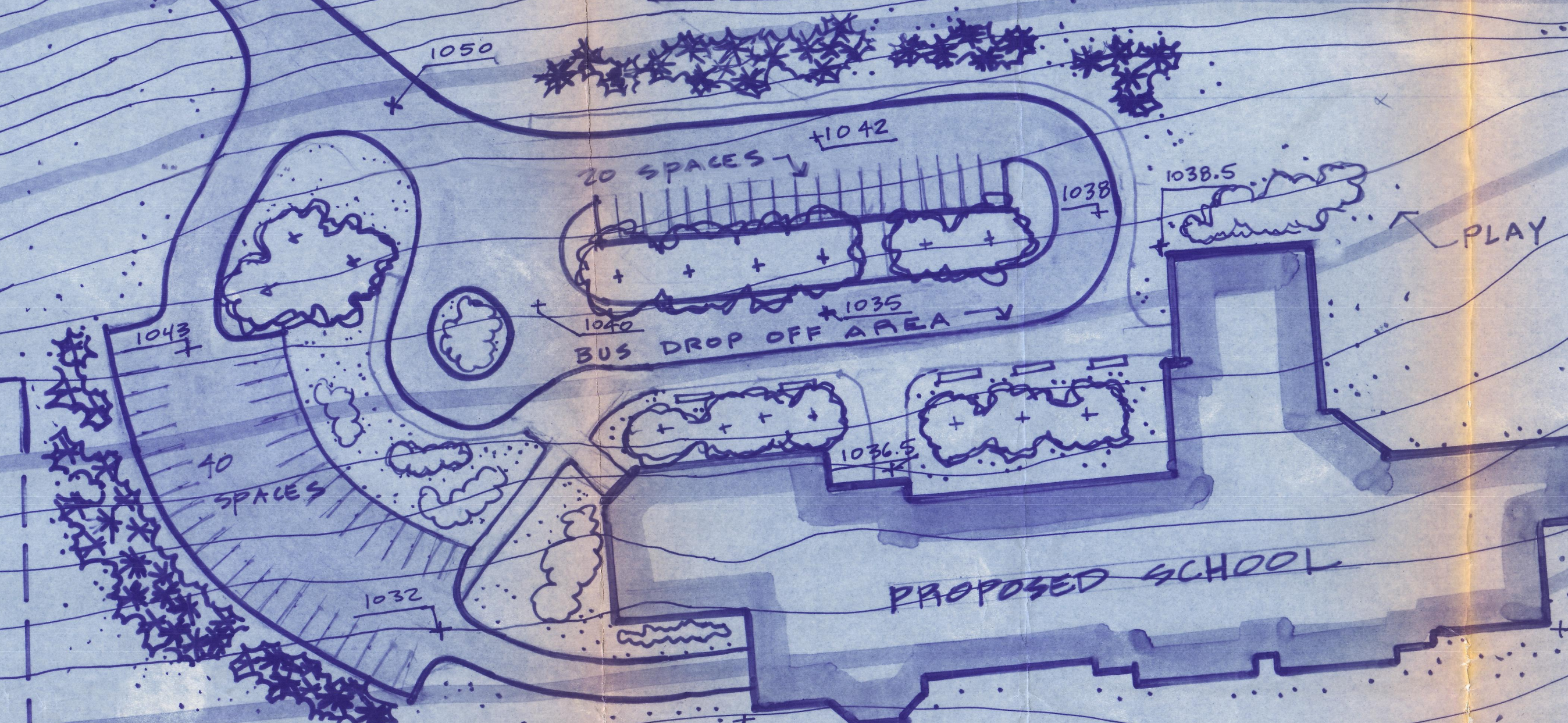
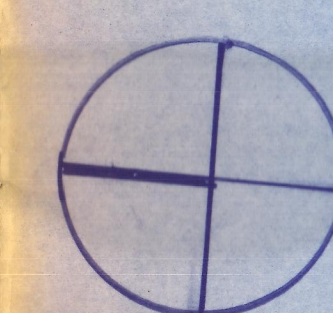
A handwritten signature in cursive script, appearing to read "Eric Gilbertson".

Eric Gilbertson
Director/State Historic Preservation Officer

EG/SCJ

cc: Ed Ryan
Hartford Planning Commission
Upper Valley-Lake Sunapee Council

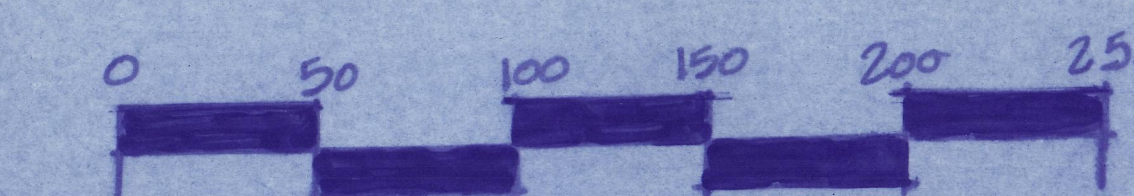
LINE STRIPING
ROAD WIDENING



PROPOSED RANDOLPH SCHOOL
RANDOLPH, VERMONT

CONCEPT PLAN

SCALE 1" = 50'

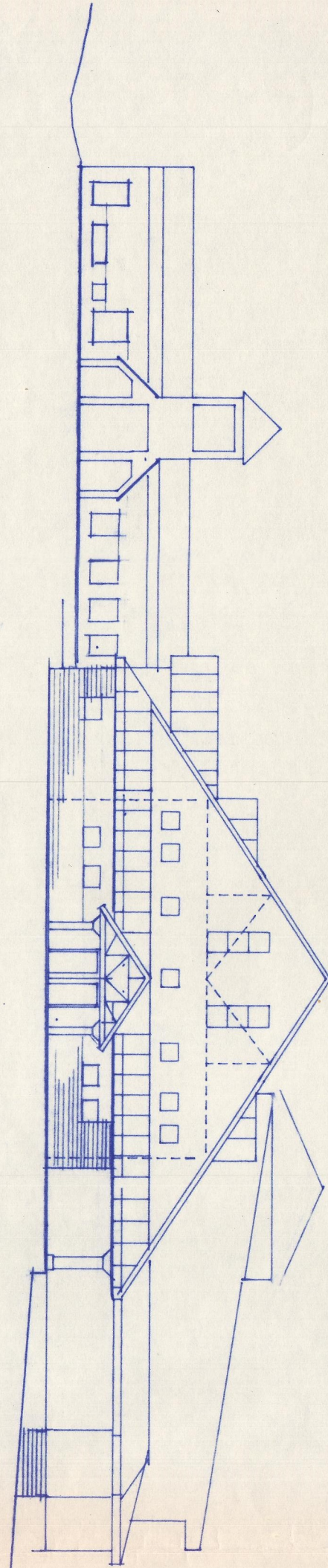


Revised set of
pre-lims for Randolph -

W-D

RECEIVED APR 1 8 1990

NORTH (STREET) ELEVATION



Upper Level
Lower Level
Overall Size

PRELIMINARY

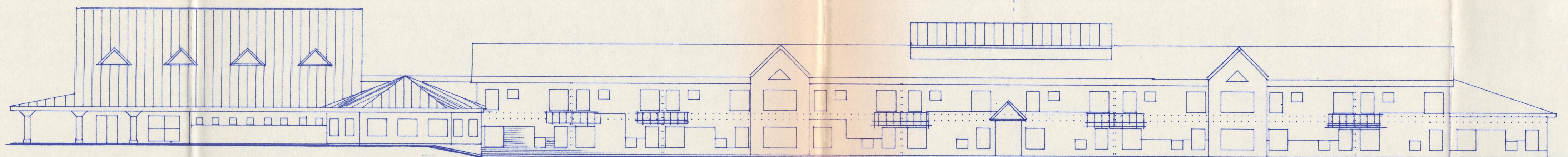
RANDOLPH ELEMENTARY SCHOOL - NEW FACILITY ON NEW SITE

PROGRAM
March 14, 1990 REV March 21, 1990, A.P.P.

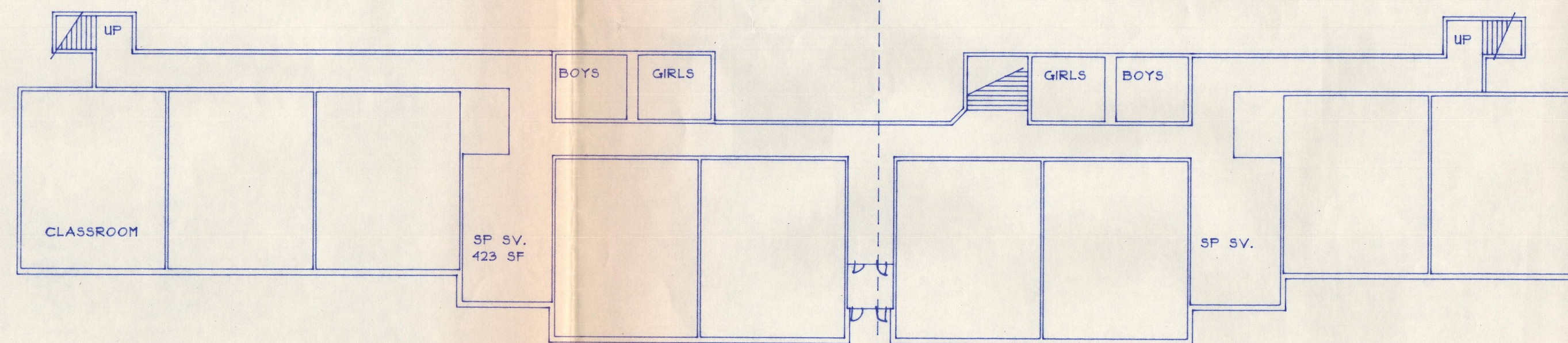
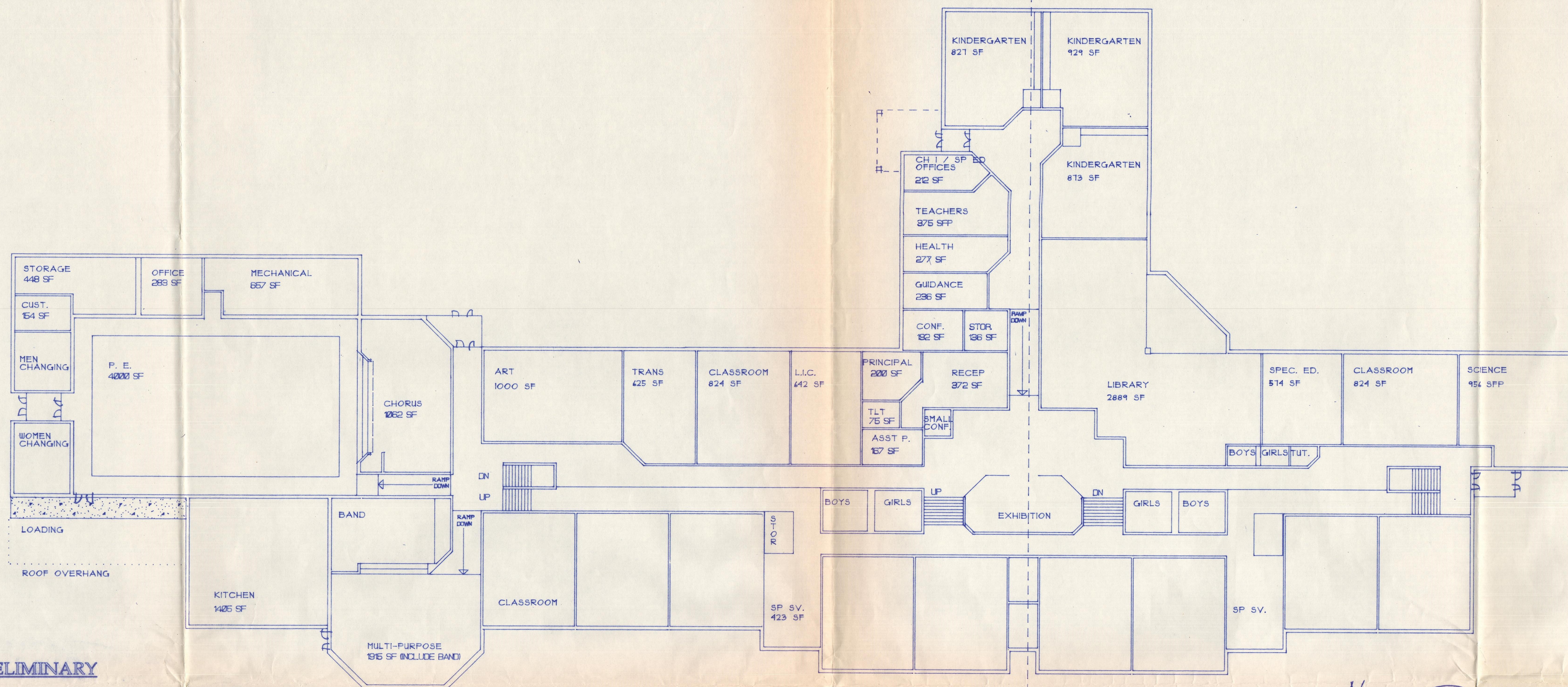
Based on Opening School Population of 540 Pupils, Core for 600

CLASSROOMS GRADES 1-6	
20 @ 824 =	16,480
SCIENCE	956
KINDERGARTEN (3)	2,629
TRANSITION	625
P. E. (including Chorus, Office, Storage, Men & Women)	6,755
MULTI-PURPOSE (including Kitchen, Band)	3,357
LIBRARY	2,889
ADMINISTRATION (Include, Conf., Principal, Ass't Principal, Recep.)	1,190
HEALTH & GUIDANCE	750
SPECIAL SERVICES	1,904
ARTS & CRAFTS	1,000
SPECIAL ED (SCC)	574
LANGUAGE INTENSIVE CLASSROOM	642
CIRCULATION, MECH/ELEC, TOILETS, WALLS, CUST. (28%)	15,632
	55,389

55,465 + 540 = 103 sf/ pupil
3 ADDITIONAL CLASSROOMS + CIRC @ 15% = 2,842 + 55,486 = 58,328SF +
600 = 97 sf / pupil

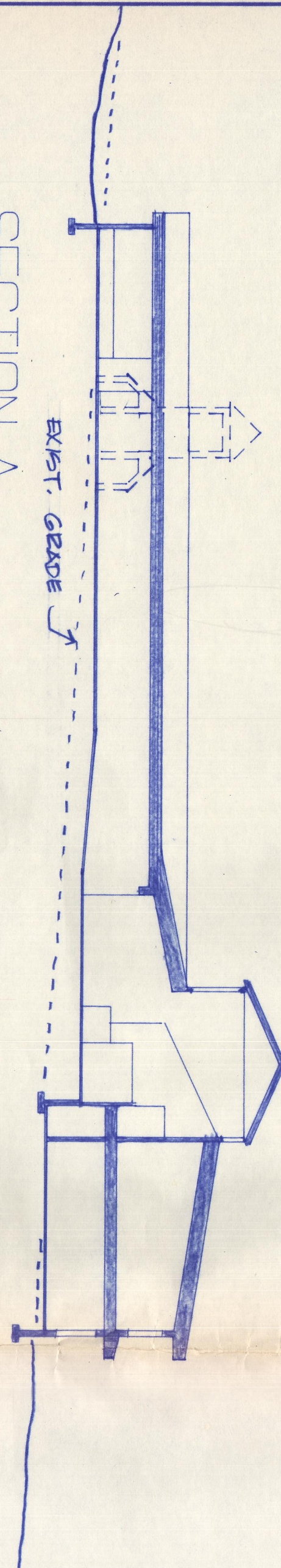


WEST

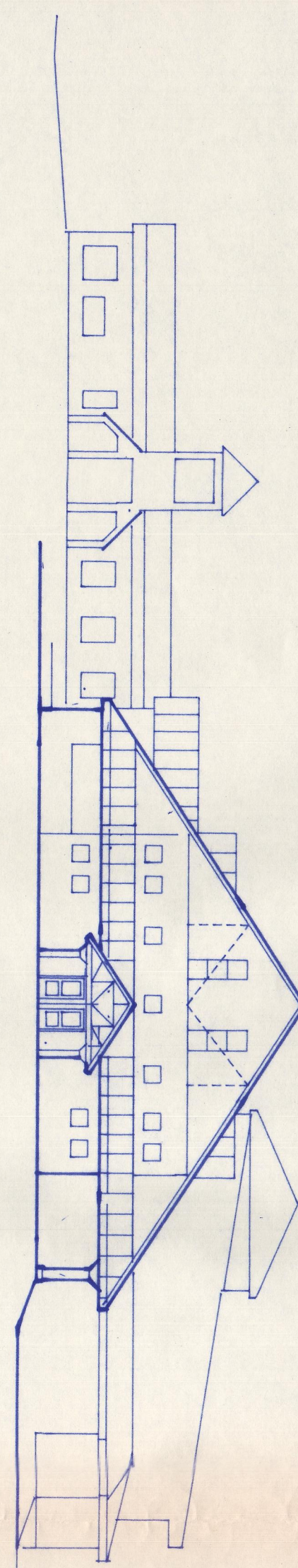


NOTE:
ENTIRE FACILITY FULLY SPRINKLERED

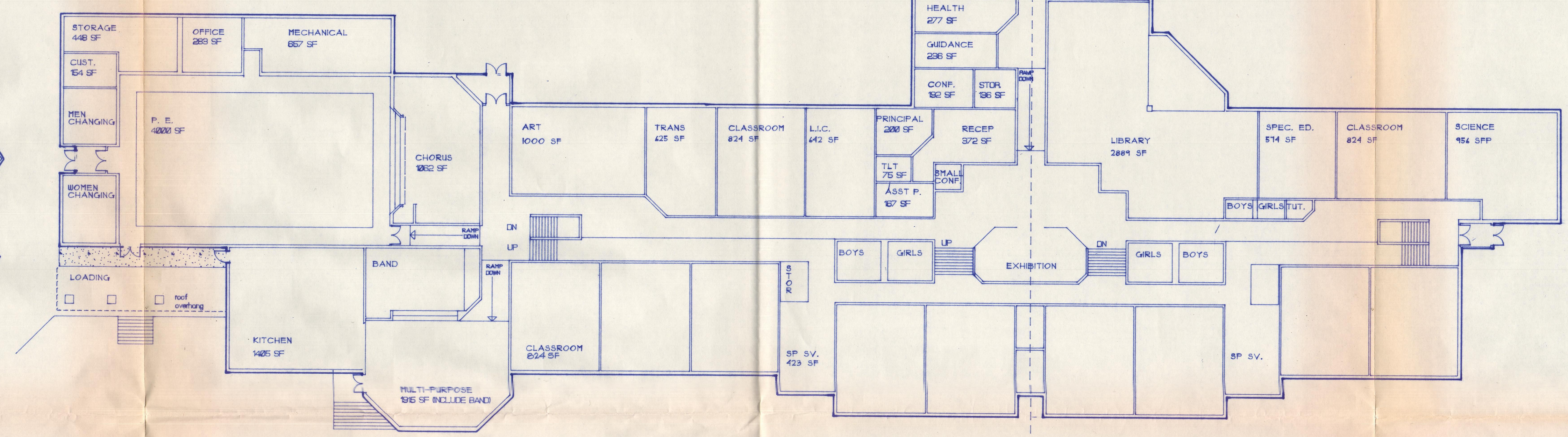
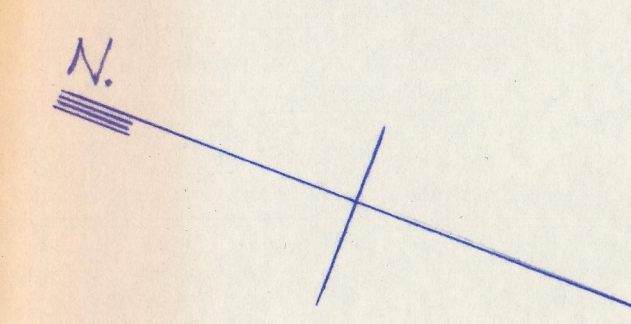
SECTION A



NORTH (STREET) ELEVATION



Sheet 104
S.E. / 2nd Floor
104 - 1st



SCHEMATIC DESIGN PROGRAM
APRIL 4, 1990

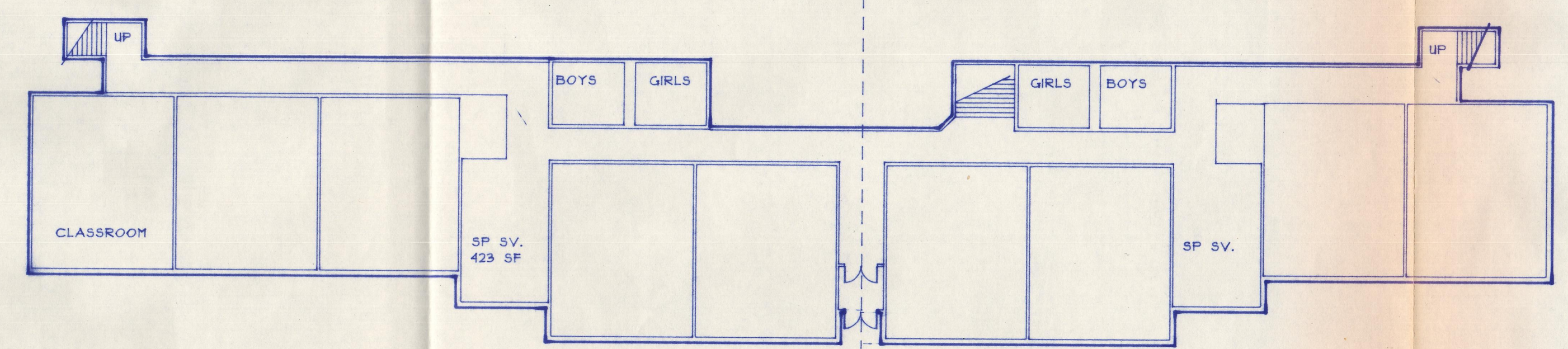
Based School Population of 540 Pupils, Core Designed for 600

CLASSROOMS GRADES 1-6	20 @ 824 =	16,480
SCIENCE		956
KINDERGARTEN (3)		2,629
TRANSITION		625
P. E. (including Chorus, Office, Storage, Men & Women)		6,800
MULTI-PURPOSE (Include Kitchen, Band)		3,312
LIBRARY		2,889
ADMINISTRATION (Include Conf., Principal, Ass't)		
Principal, Reception		1,190
TEACHERS		375
HEALTH & GUIDANCE		756
ARTS & CRAFTS		1,000
SPECIAL SERVICES		1,904
MUSIC (Included in Multi-Purpose)		
SPECIAL ED (SCC)		574
LANGUAGE INTENSIVE CLASSROOM		642
CIRCULATION, MECH/ELEC, TOILETS, WALLS, CUST. (29%)		16,142
		56,274

56,274 + 540 = 104 sf / pupil
3 ADDITIONAL CLASSROOMS + CIRC @ 15% = 2,842 + 56,274 = 59,116 sf +
600 = 98 sf / pupil

UPPER LEVEL CLASSROOMS

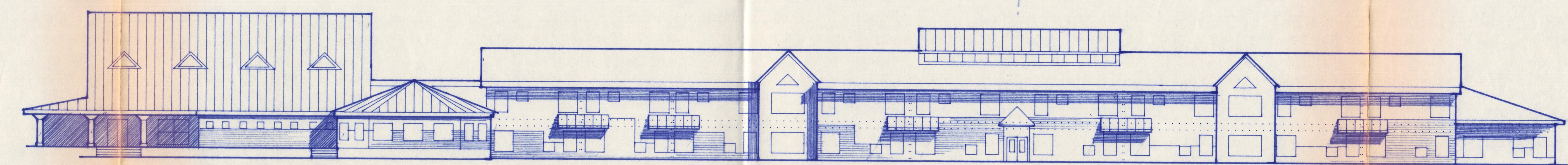
43,919 SF



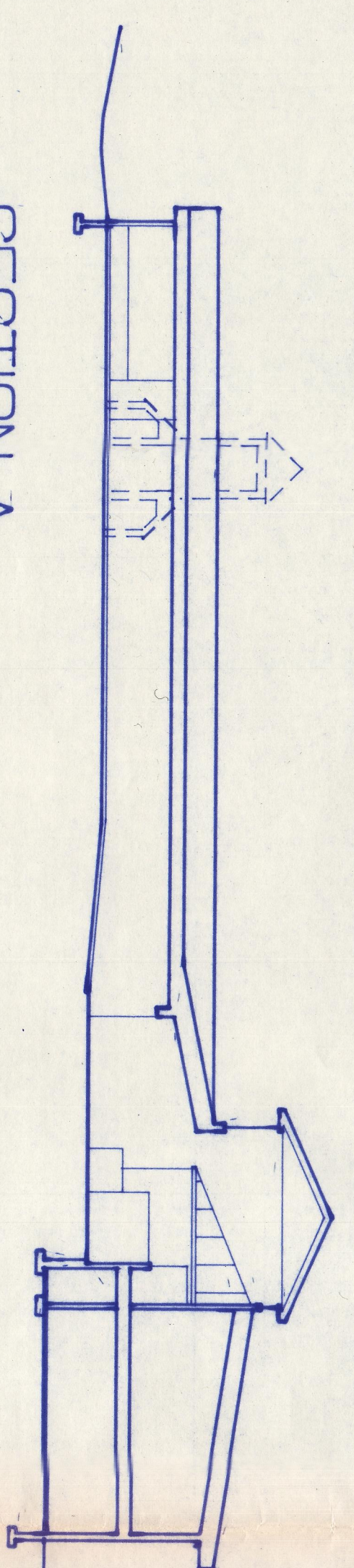
LOWER LEVEL CLASSROOMS

12,295 SF

WEST



SECTION A



RECEIVED APR 10 1990

NOTE: ENTIRE FACILITY FULLY SPRINKLERED