



STATE OF VERMONT

AGENCY OF COMMERCE AND COMMUNITY DEVELOPMENT

January 14, 2000

John Sprinkle, Supervisory Historian
National Historic Landmarks Survey
1849 C Street, NW, Room NC400
Washington, DC 20240

RE: Socialist Labor Party Hall, 46 Granite Street, Barre City

Dear Mr. Sprinkle:

The Vermont State Historic Preservation Office strongly supports the efforts of the Barre, Vermont, Historical Society in seeking National Historic Landmark status for the Socialist Labor Party Hall in Barre City, Vermont, under the National Park Service labor history theme study.

Granite is one of the most important building and monument stones and Barre, Vermont, has long been the granite capital of the world. The Socialist Labor Party Hall is the most prominent symbol of the granite industry and the important contributions of the granite workers of Barre to the American labor movement. This building was built in 1900 by volunteers of Barre's Italian community as a meeting hall for the Socialist Labor Party and was the headquarters from 1901 to 1936 of the Granite Cutters International Association, the largest local union of granite workers in America. That the hall was paid for and built by the granite workers themselves gives the building additional significance. Every brick was laid, every granite sill carved, and every floorboard nailed down as a point of ideology and in the effort to further the cause of labor and make a better way of life and work for the granite workers of Barre and indeed the entire union. The hall is rather humble in appearance but blazes forth with pride, for everyone to see, what it stands for and what its purpose is--through the granite medallion over the front door carved with the arm of labor, the symbol of the Socialist Labor Party.

The granite industry boomed in Barre, starting in the 1880s with better rail lines and new mechanical equipment. Numerous skilled stonecutters and laborers from Scotland, Italy, Scandinavia, and other European countries made the industry great. Labor and living conditions in Barre were extremely difficult. Barre's population swelled from 2,060 in 1880 to over 10,700 by 1910. An 1895 report by George Ellsworth Hooker about the labor and life conditions in Barre, particularly Millstone Hill, noted the long hours and lack of adequate housing, recreational activities, proper sewage systems, water supplies, and community centers (including churches). The need to establish a supportive labor movement was critical. This is the same situation found over and over again in newly emerging industries in America, and in Barre the workers quickly took the initiative to organize to instill positive change. The immigrant workers brought with them political ideas shaped by the difficult working conditions in Europe. Many considered themselves

DEPARTMENT
OF HOUSING &
COMMUNITY
AFFAIRS

Divisions for:

- * Community Development
- * Historic Preservation
- * Housing
- * Planning

National Life
Office Building
Drawer 20
Montpelier, VT
05620-0501

Telephone:
802-828-3211
800-622-4553

Fax:
802-828-2928

Historic
Preservation
Fax:
802-828-3206

Page 2

January 14, 2000

to be socialists and believed strongly in social reform. In 1900 more than 90% of Barre's workers belonged to one of the fifteen local labor unions. This is an astoundingly high percentage of union membership. It is highly significant that in the early boom years of this important industry in Barre, labor unions got their foothold, were considered seriously, and improvements were achieved. Particularly active in Barre were the skilled Italian craftsmen.

As noted in the National Register nomination for the Labor Hall, when it was built it received national and even international attention. Camillo Cianfarra from the Italian weekly paper, *Il Proletario*, published in New York City reported:

As the comrades from other countries know, the Italian Socialist Section of Barre has built a Hall for the grand sum of 7,000 dollars, most of which has already been paid. That which at first would have seemed impossible has been accomplished, and the Hall stands now on Granite Street, a superb synthesis and demonstration of the collective efforts of the workers joined and guided by the light of an idea like ours. . .

It is clear that the Labor Hall and the Socialist Labor Party in Barre was a model for the party. The party and the Granite Cutters International Association were dedicated organizations that truly made life better for their workers. They worked to help themselves—holding meetings and rallies and fervently discussing important ideological issues, providing entertainment, and establishing a co-operative store to provide workers with goods at reasonable prices. They practiced what they preached, reaching out to others when the need was great. During the 1912 strike at the Lawrence, Massachusetts, textile mills, when over 50,000 workers were out of work, the granite workers of Barre welcomed and cared for 35 children of the workers. One of the strike leaders came to Barre the next year to speak at the Hall and thank sympathizers for their support.

Barre's Socialist Labor Party Hall is an outstanding symbol of all that is best about the labor movement in the United States. It was built by and for granite workers and their families at great personal sacrifice and at the heady time when the significant granite industry in Barre was exploding on its way to become the world leader in the field. Members of the labor party and the granite cutters union earnestly wished to make their working conditions and their lives better. They achieved many of the important goals they set for themselves and in turn inspired and encouraged others. The building still clearly tells the story of the brave hearts and courage of these men and women and their struggles to achieve for workers and their families what was right and just.

Page 3
January 14, 2000

The Socialist Labor Party Hall is worthy of National Historic Landmark status and the Vermont State Historic Preservation office urges its designation. Should you have any questions, please feel free to contact me (direct line: 802-828-3046).

Sincerely,

DIVISION FOR HISTORIC PRESERVATION

A handwritten signature in cursive script that reads "Elsa Gilbertson". The signature is written in dark ink and is positioned below the typed name of the sender.

Elsa Gilbertson
National Register Specialist

PATRICK LEAHY
VERMONT

COMMITTEES:
AGRICULTURE, NUTRITION, AND FORESTRY
APPROPRIATIONS
JUDICIARY

United States Senate

WASHINGTON, DC 20510-4502

074700

April 4, 2000

The Honorable Bruce Babbitt
Secretary
U.S. Department of the Interior
National Park Service
1849 C Street, N.W.
Washington, DC 20240

Dear Secretary Babbitt:

I am writing to support the designation of the Socialist Labor Party Hall in the State of Vermont as a National Historic Landmark.

The Socialist Labor Party Hall was a focal point for the labor movement in the state of Vermont. Throughout the 1930s the building served as a meeting place for political activists and the Italian immigrant population of Vermont. The Labor Hall is the only building known to have been built by the Socialist Labor Party for the purposes of political activism and the hall was home to some of the most prominent political leaders of the era. Its location near the Canadian border allowed the building to be used as a rural refuge for people being persecuted for their beliefs, providing haven for labor leaders such as Luigi Galleani and Emma Goldman.

The Labor Hall embodies a national movement that helped shape our nation and it stands as a symbol for an important political and social era in Vermont. The Labor Hall is considered one of the best structures still standing that represents the labor movement in America. Adding this building to the National Historic Landmark registry will help ensure that this property is protected throughout the years. Thank you for your consideration of this request.

Sincerely,

PATRICK LEAHY
United States Senator

PJL/cmb

cc: Carol D. Shull, National Historic Landmark Survey

RECEIVED
00 APR 11 PM 3:00
OFFICE OF THE CLERK
EXECUTIVE SECRETARIAT



United States Department of the Interior

NATIONAL PARK SERVICE
1849 C Street, N.W.
Washington, D.C. 20240

RECEIVED
MAY 01 2000
U.S. DEPARTMENT OF THE INTERIOR

IN REPLY REFER TO:

H34(2280)

APR 26 2000

Honorable Patrick Leahy
United States Senate
Washington, D.C. 20510

Dear Senator Leahy:

Thank you for your letter of April 4, 2000 expressing your strong support for the nomination of the Socialist Labor Party Hall in Barre, Vermont as a National Historic Landmark. I am pleased to inform you that this property has recently completed two important steps in this designation process.

On April 16, 2000 the National Park System Advisory Board accepted the April 10th recommendation of its National Historic Landmarks Committee regarding the national significance and high integrity of the Socialist Labor Party Hall. The nomination has been forwarded to the Secretary of the Interior for his consideration. We anticipate that a final decision will be made within the next 8-12 weeks.

Thank you for your continuing efforts supporting the recognition and preservation of this important historic site.

If you should have any questions regarding the designation process, please contact Mr. Loran Fraser at 202/208-7920.

Sincerely,

/s/ John Robbins

Katherine H. Stevenson
Associate Director, Cultural Resource
Stewardship and Partnerships

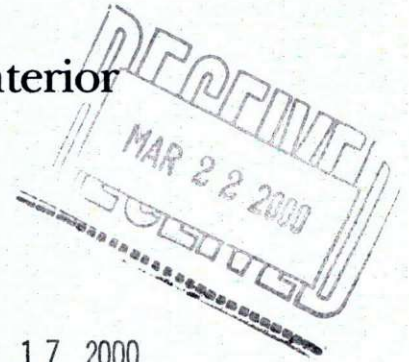
102

cc: Ms. Emily Wadhams, SHPO (w/c incoming)
Vermont Division for Historic Preservation
National Life Building, Drawer 20
Montpelier, Vermont 05620



United States Department of the Interior

NATIONAL PARK SERVICE
1849 C Street, N.W.
Washington, D.C. 20240



IN REPLY REFER TO:

H34(2280)

MAR 17 2000

Ms. Emily Wadhams, SHPO
Vermont Division for Historic Preservation
National Life Building, Drawer 20
Montpelier, Vermont 05620

Dear Ms. Wadhams:

We have been requested to include the Socialist Labor Party Hall, located in Barre, Vermont, in the current group of properties being considered for National Historic Landmark designation. The timing of this special request has made it necessary for us to ask that the owners of the property and the Mayor of the City of Barre waive their right to a 60-day period for commenting on the Landmark nomination of the property. As a courtesy, we wish to inform you of this special request.

A study nominating the property for National Historic Landmark designation has been prepared, and a copy of it is enclosed. Should you wish to comment on the study, we ask that you do so speedily, so that the National Park System Advisory Board may have the benefit of your thoughts at its upcoming meeting. The time and location of the meeting are indicated on the enclosure.

The National Historic Landmarks Program recognizes properties of national significance in the Nation's history, architecture, archeology, and culture. National Historic Landmark designation follows three steps: study and preparation of a nomination; review of the nomination by the National Park System Advisory Board; and a decision by the Secretary of the Interior on the Board's recommendations. Upon designation, owners of NHLs may apply for a bronze plaque signifying this honor.

National Historic Landmarks Program regulations provide that certain parties shall receive notice of our preparation of a Landmark study and of the National Park System Advisory Board meeting at which the Board will consider that study. The notified parties ordinarily have 60 days before the Board meeting to submit their views in writing if they so desire. However, the regulations also provide for waiving of that full 60-day commenting period, when all property owners and the chief elected local official have agreed in writing to a waiver.

If we receive the required waivers by **April 7, 2000**, the National Park System Advisory Board National Landmarks Committee will review the study and may recommend Landmark designation to the full Advisory Board. We will then inform the Secretary of the Interior of the Board's recommendation for his final decision.

To assist you in considering this matter, we have enclosed a copy of the regulations that govern the National Historic Landmarks Program. They describe the criteria for designation (Sec. 65.4), and include other information on the Program. We are also enclosing a fact sheet that outlines the effects of designation.

Sincerely,

A handwritten signature in black ink, appearing to read "C. D. Shull". The signature is written in a cursive style with a large, sweeping initial "C".

Carol D. Shull
Chief, National Historic Landmarks Survey
Keeper of the National Register of Historic Places

Enclosures

PROPERTY STUDIED FOR
NATIONAL HISTORIC LANDMARK DESIGNATION

**SOCIALIST LABOR PARTY HALL
BARRE, VERMONT**

The Landmarks Committee of the National Park System Advisory Board will evaluate this property at a meeting to be held on Monday, April 10, 2000, beginning at 9:00 a.m. in Hearing Room 100, 800 North Capitol Street, NW, Washington, DC. The Landmarks Committee evaluates the studies of historic properties being nominated for National Historic Landmark designation in order to advise the full National Park System Advisory Board at their meeting on Sunday, April 16, 2000, in San Francisco, California, and will recommend to the full Board those properties that the Committee finds meet the criteria of the National Historic Landmarks Program.

Owners of private properties nominated for NHL designation have an opportunity to concur with or object to listing in accord with the National Historic Preservation Act and 36 CFR 65. Any owner or partial owner of private property who chooses to object to designation must submit a notarized statement certifying that the party is the sole or partial owner of the private property and objects to the designation. Each owner or partial owner of private property has one vote regardless of the portion of the property that the party owns. If a majority of private property owners object, a property will not be designated. Letters objecting to or supporting nominations may be sent to Ms. Carol D. Shull, Chief, National Historic Landmarks Survey, at the National Park Service, National Register, History and Education, 1849 C Street, N.W., NC 400, Washington, D.C. 20240.

Should you wish to obtain information about these meetings, or about the National Historic Landmarks Program, please contact Historian Patty Henry at the National Park Service, National Register, History and Education, 1849 C Street, N.W., NC 400, Washington, D.C. 20240; or by telephone at 202/343-8163.



STATE OF VERMONT

AGENCY OF COMMERCE AND COMMUNITY DEVELOPMENT

March 30, 2000

Carol D. Shull, Chief
National Historic Landmarks Survey
National Park Service
National Register, History and Education
1849 C Street, N.W., NC 400
Washington, DC 20240

RE: Socialist Labor Party Hall, Barre City

Dear Ms. Shull:

The Vermont State Historic Preservation Office strongly supports the designation of the Socialist Labor Party Hall in Barre City as a National Historic Landmark.

DEPARTMENT
OF HOUSING &
COMMUNITY
AFFAIRS

Divisions for:

- * Community Development
- * Historic Preservation
- * Housing
- * Planning

National Life
Office Building
Drawer 20
Montpelier, VT
05620-0501

Telephone:
802-828-3211
800-622-4553

Fax:
802-828-2928

Historic
Preservation
Fax:
802-828-3206

The Socialist Labor Party Hall, built in 1900, is a prominent symbol of the American labor movement. It may be the only property associated with the Socialist Labor Party, the first national socialist political party in the United States. It was built by and for the granite workers who were party members and whose labors and skills made Barre, Vermont, the granite capital of the world. Because of its prominent role in the history of American socialism and anarchism and for what it shows about workers uniting to make their work and home lives better, the Barre Socialist Labor Party Hall clearly deserves recognition as a National Historic Landmark.

It should be noted that on page 15 there is a reference to Drury brick from "nearby Burlington." The Drury company actually was located in the Town of Essex, not that far from Burlington. It looks like there is an omission in the statement of significance at the end of page 22. There is no fuller treatment of the story relating to the 1921 Saco and Vanzetti trial as the second paragraph on page 21 leads the reader to believe will follow.

This office is pleased to support National Historic Landmark designation for this property. Should you have any questions, please feel free to contact me. Thank you for the opportunity to comment.

Sincerely,
DIVISION FOR HISTORIC PRESERVATION

Emily Wadhams
State Historic Preservation Officer

EW/EG

NHL -
SOCIALIST LABOR HALL
ROCKINGHAM MEETING HALL

Elsa Gilbertson

From: Edson_Beall@nps.gov
Sent: Thursday, May 25, 2000 1:25 PM
To: Betsy.Friedberg@sec.state.ma.us; callahan@nebraskahistory.org; chandler@scdah.state.sc.us; christensenro@sosmail.state.mi.us; cjensen@history.state.ut.us; cstager@bellsouth.net; doakley@mdah.state.ms.us; Jim.Draeger@Mail.admin.Wisc.edu; frank_hurdis_at_dnrlan@ima.isd.state.in.us; ggoodwin@mail.dos.state.fl.us; ElGilbertson@dca.state.vt.us; gretchen_kinnard@MAIL.DNR.STATE.GA.US; judy.george@thc.state.tx.us; Kara@dah.state.ar.us; Kathy.Howe@oprhp.state.ny.us; Ken_Thomas@MAIL.DNR.STATE.GA.US; Linda.Abston@oprhp.state.ny.us; hp@crt.state.la.us; bmattick@mail.dos.state.fl.us; mkrass@kshs.org; mperry1@mail.state.ky.us; mrharmon@clan.lib.nv.us; hattori@unr.edu; nrmitcs@mail.dnr.state.mo.us; nwright@freenet.columbus.oh.us; PBergen@sec.state.ma.us; power@scdah.state.sc.us; preservation@nhdhr.state.nh.us; Raymond.Smith@oprhp.state.ny.us; rjones@mail.dos.state.fl.us; Robert.Englert@oprhp.state.ny.us; susan.roth@mnhs.org; rroper@history.state.ut.us; sbrich@missc.state.wy.us; Stephen.Rogers@state.sd.us; kens@dah.state.ar.us; susan.haylock@state.or.us; aswallow@hpa084r1.state.il.us; wcollins@pr.state.az.us; nwright@freenet.columbus.oh.us
Subject: National Register Weekly List 05/26/2000

Subject: National Register Weekly List 05/26/2000
Author: Edson Beall at NP-WASO-NRHE
Date: 5/25/00 1:07 PM

UNITED STATES DEPARTMENT OF THE INTERIOR May 26, 2000
NATIONAL PARK SERVICE
NATIONAL REGISTER OF HISTORIC PLACES
MAIL STOP 2280, SUITE NC 400
1849 C STREET, NW
WASHINGTON, DC 20240

PLEASE NOTE PHYSICAL LOCATION ADDRESS
(FedEx, UPS, SPECIAL DELIVERIES, AND VISITORS):

NATIONAL PARK SERVICE
NATIONAL REGISTER OF HISTORIC PLACES
SUITE 400 (OFFICES) or SUITE LL99 (ARCHIVES)
800 NORTH CAPITOL STREET, NW
WASHINGTON, DC 20002

The Director of the National Park Service is pleased to send you the following announcements and actions on properties for the National Register of Historic Places. For further information contact Edson Beall via voice 202/343-1572, fax 202/343-1836, regular or e-mail: Edson_Beall@nps.gov.

Washington, D.C.--Secretary of the Interior Bruce Babbitt announced the designation of 15 properties in 10 states as National Historic Landmarks (NHL). The designated sites were recommended to the Secretary by the National Park System Advisory Board for their national significance in American history and culture.

A site is recognized as a NHL because of its historical importance to the entire nation. Only 2310, or roughly 3% of the 71,000 sites listed in the National Register of Historic Places have been selected for landmark designation. The Historic Sites Act of 1935 authorizes the Secretary of the Interior to recognize historic places judged to have exceptional value to the nation. The newly designated sites appear below.

For more information contact Patty Henry of the National Historic Landmark Survey. Ph. 202-343-8163, E-mail: Patty_Henry@nps.gov
Visit our NHL Web Site: www.cr.nps.gov/nhl

WEEKLY LIST OF ACTIONS TAKEN ON PROPERTIES: 5/15/00 THROUGH 5/19/00

KEY: State, County, Property Name, Address/Boundary, City, Vicinity, Reference Number, NHL, Action, Date, Multiple Name

ARIZONA, YAVAPAI COUNTY,
Cottonwood Commercial Historic District,
Approx. from 712 to 1124 N. Main St.,
Cottonwood, 00000497,
LISTED, 5/18/00

ARKANSAS, CARROLL COUNTY,
Thorncrown Chapel,
AR 62, 0.5 mi. W of Eureka Springs,
Eureka Springs vicinity, 97000452,
LISTED, 4/28/00
(Arkansas Designs of E. Fay Jones MPS)

ARKANSAS, MADISON COUNTY,
Alabam School,
S of Alabam at jct. of AR 68 and AR 127,
Alabam vicinity, 76000432,
REMOVED, 5/12/00

ARKANSAS, PULASKI COUNTY,
Pfeifer Brothers Department Store,
522-524 S. Main St.,
Little Rock, 00000464,
LISTED, 5/18/00

ARKANSAS, WASHINGTON COUNTY,
Jones, E. Fay and Gus, House,
1330 N. Hillcrest,
Fayetteville, 97000453,
LISTED, 4/28/00
(Arkansas Designs of E. Fay Jones MPS)

CONNECTICUT, MIDDLESEX COUNTY,
Portland Brownstone Quarries,
Brownstone Ave., and Silver St.,
Portland, 00000703,
NATIONAL HISTORIC LANDMARK DESIGNATED/LISTED, 5/16/00

ILLINOIS, CHAMPAIGN COUNTY,
University of Illinois Buildings Designed by Charles A. Platt
Multiple Property Submission
COVER DOCUMENTATION ACCEPTED, 5/11/00

INDIANA, BARTHOLOMEW COUNTY,
First Baptist Church,
3300 Fairlawn Dr.,
Columbus, 00000707,
NATIONAL HISTORIC LANDMARK DESIGNATED/LISTED, 5/16/00
(Modernism in Architecture, Landscape Architecture, Design, and Art in
Bartholomew County, 1942-1965 MPS)

INDIANA, BARTHOLOMEW COUNTY,
Irwin Union Bank and Trust,
500 Washington St.,
Columbus, 00000704,
NATIONAL HISTORIC LANDMARK DESIGNATED/LISTED, 5/16/00
(Modernism in Architecture, Landscape Architecture, Design, and Art in
Bartholomew County, 1942-1965 MPS)

INDIANA, BARTHOLOMEW COUNTY,
Miller House,
Address Restricted,
Columbus, 00000706,
NATIONAL HISTORIC LANDMARK DESIGNATED/LISTED, 5/16/00
(Modernism in Architecture, Landscape Architecture, Design, and Art in
Bartholomew County, 1942-1965 MPS)

INDIANA, BARTHOLOMEW COUNTY,
North Christian Church,
850 Tipton Ln.,
Columbus, 00000705,
NATIONAL HISTORIC LANDMARK DESIGNATED/LISTED, 5/16/00
(Modernism in Architecture, Landscape Architecture, Design, and Art in
Bartholomew County, 1942-1965 MPS)

INDIANA, MARION COUNTY,
Hawthorne Branch Library No. 2,
70 N. Mount St.,
Indianapolis, 00000499,
LISTED, 5/18/00

IOWA, JEFFERSON COUNTY,
Commercial Block,
106, 108, 110 N. Main St.,
Fairfield, 99000120,
REMOVED, 5/19/00
(Louden Machinery Company, Fairfield Iowa MPS)

KENTUCKY, WOODFORD COUNTY,
Labrot & Graham's Old Oscar Pepper Distillery,
7855 McCracken Pike,
Frankfort vicinity, 95001272,
NATIONAL HISTORIC LANDMARK DESIGNATED/LISTED, 5/16/00

LOUISIANA, EAST BATON ROUGE PARISH,
US Post Office and Courthouse--Baton Rouge,
707 Florida Ave.,
Baton Rouge, 00000500,
LISTED, 5/18/00

LOUISIANA, RAPIDES PARISH,
US Post Office and Courthouse--Alexandria,
515 Murray St.,
Alexandria, 00000501,
LISTED, 5/18/00

MAINE, CUMBERLAND COUNTY,
Cleaveland, Parker, House,
75 Federal St.,
Brunswick, 00000702,
NATIONAL HISTORIC LANDMARK DESIGNATED/LISTED, 5/16/00

MASSACHUSETTS, BARNSTABLE COUNTY,
South Yarmouth/Bass River Historic District,
Roughly Main St. from Pine to South St., River St. from Main to Bass R. Pkwy.,
and Willow St. from River to South St.,
Yarmouth, 90000787,
ADDITIONAL DOCUMENTATION APPROVED, 5/16/00

MASSACHUSETTS, BERKSHIRE COUNTY,
Main Street Cemetery,
Main St.,
Dalton, 00000502,
LISTED, 5/18/00

MASSACHUSETTS, MIDDLESEX COUNTY,
Gropius House,
68 Baker Ridge Rd.,
Lincoln, 00000709,
NATIONAL HISTORIC LANDMARK DESIGNATED/LISTED, 5/16/00

MASSACHUSETTS, PLYMOUTH COUNTY,
Muttock Historic and Archeological District,
Address Restricted,
Middleborough vicinity, 00000504,
LISTED, 5/18/00

MICHIGAN, KENT COUNTY,
Medical Arts Building,
26 Sheldon Blvd. SE,
Grand Rapids, 00000506,
LISTED, 5/18/00

MINNESOTA, GOODHUE COUNTY,
Hall, Dr. Orrin I., House,
206 W. 3rd St.,
Zumbrota, 80002066,
REMOVED, 5/17/00
(Rural Goodhue County MRA)

MINNESOTA, KANABEC COUNTY,
Coin School,
Co. Hwys. 4 and 16,
Mora vicinity, 80002086,
REMOVED, 5/17/00
(Kanabec County MRA)

MONTANA, FLATHEAD COUNTY,
Great Northern Railway Buildings (Boundary Increase),
Glacier National Park,
Glacier National Park, 87001453, NHL
NATIONAL HISTORIC LANDMARK DESIGNATED/LISTED, 5/16/00

NEW MEXICO, OTERO COUNTY,
US Post Office--Alamogordo,
1101 New York Ave.,
Alamogordo, 00000510,
LISTED, 5/18/00

NEW YORK, ESSEX COUNTY,
Santanoni Preserve,
N of NY 29N,
Newcomb vicinity, 86002955,
NATIONAL HISTORIC LANDMARK DESIGNATED/LISTED, 5/16/00
(Great Camps of the Adirondacks TR)

NEW YORK, HAMILTON COUNTY,
Sagamore Lodge,
Off NY 28 at W end of Sagamore Lake,
Racquette Lake vicinity, 76001221,
LISTED, 5/16/00

NORTH CAROLINA, MOORE COUNTY,
Lakeview Historic District,
Camp Easter Rd., Crystal Lake Dr., Holly Rd., Matthews Rd., and McFayden Ln.,
Lakeview, 00000513,
LISTED, 5/18/00

NORTH CAROLINA, PITT COUNTY,
Sheppard, Thomas, Farm,
NC 1550, near jct. of NC 1552,
Stokes, 00000517,
LISTED, 5/18/00

OHIO, KNOX COUNTY,
Gambier Historic District,
Roughly bounded by OH 229, Meadow Ln., Brooklyn St. and N Village boundary,
Gambier, 99001686,
LISTED, 5/10/00

OREGON, KLAMATH COUNTY,
Blackburn Sanitarium,
1842 Esplanade,
Klamath Falls, 96001046,
ADDITIONAL DOCUMENTATION APPROVED, 5/16/00

OREGON, MULTNOMAH COUNTY,
Bishopcroft of the Episcopal Diocese of Oregon,

1832 S/W Elm St.,
Portland, 0000061,
LISTED, 5/18/00

OREGON, MULTNOMAH COUNTY,
Columbia River Highway,
Historic Columbia River Highway No. 100,
Troutdale vicinity, 83004168,
NATIONAL HISTORIC LANDMARK DESIGNATED/LISTED, 5/16/00

PENNSYLVANIA, ADAMS COUNTY,
Fairfield Historic District,
Roughly bounded by Landis Dr., Steelman St., Wortz Dr., and NW border Fairfield
Borough,
Fairfield, 00000518,
LISTED, 5/18/00
(Adams County properties associated with the Battle of Gettysburg MPS)

PENNSYLVANIA, ADAMS COUNTY,
Rock Creek--White Run Union Hospital Complex,
Baltimore Pike, Goulden Rd. and White Church Rd.,
Mount Joy, 00000520,
LISTED, 5/18/00
(Adams County properties associated with the Battle of Gettysburg MPS)

PENNSYLVANIA, FAYETTE COUNTY,
Hagan, Isaac Newton, House,
less than 1 mi. SW of the jct. of IN 2010 and IN 2019,
Chalk Hill (Stewart Township), 00000708,
NATIONAL HISTORIC LANDMARK DESIGNATED/LISTED, 5/16/00

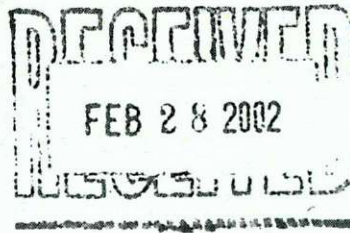
PENNSYLVANIA, LANCASTER COUNTY,
Montgomery, William, House,
19-21 S. Queen St.,
Lancaster, 00000519,
LISTED, 5/18/00

RHODE ISLAND, NEWPORT COUNTY,
Griswold, John, House,
76 Bellevue Ave,
Newport, 71000023,
NATIONAL HISTORIC LANDMARK DESIGNATED/LISTED, 5/16/00

VERMONT, WASHINGTON COUNTY,
Socialist Labor Party Hall,
46 Granite St.,
Barre City, 98001267,
NATIONAL HISTORIC LANDMARK DESIGNATED/LISTED, 5/16/00

VERMONT, WINDHAM COUNTY,
Rockingham Meeting House,
Meeting House Rd.,
Rockingham, 79000232,
NATIONAL HISTORIC LANDMARK DESIGNATED/LISTED, 5/16/00

WISCONSIN, SAUK COUNTY,
Steam Locomotive #1385,
E8948 Diamond Hill Rd.,
North Freedom, 00000524,
LISTED, 5/18/00



February 22, 2002

Ms. Emily Wadhams, SHPO
Vermont Division for Historic Preservation
National Life Building, Drawer 20
Montpelier, Vermont 05620

Dear Ms. Emily Wadhams:

We are pleased to inform you that the National Historic Landmark (NHL) nomination form for the Socialist Labor Party Hall, which was designated by the Secretary of the Interior as a National Historic Landmark on May 16, 2000, has been finalized. Enclosed is a copy of this final nomination form.

We thank you for your patience while waiting for your copy of the final nomination for this property.

If you have any additional questions, feel free to contact Ms. Patty Henry at 202-343-8163.

Sincerely,
The National Historic Landmarks Survey/The National Register of Historic Places



United States Department of the Interior

NATIONAL PARK SERVICE
1849 C Street, N.W.
Washington, D.C. 20240

IN REPLY REFER TO:

H3417(2280)

JUN 23 2000

Ms. Emily Wadhams, SHPO
Vermont Division for Historic Preservation
National Life Building, Drawer 20
Montpelier, Vermont 05620

Dear Ms. Wadhams:

I am pleased to inform you that the Socialist Labor Party Hall in Barre, Vermont has been found to possess national significance in the history of the United States. As a result, the Secretary of the Interior designated this property a National Historic Landmark on May 16, 2000.

The purpose of landmark designation is to identify and recognize nationally significant sites and to encourage their owners to preserve them. Landmarks are chosen after careful study by the National Park Service. They are evaluated by the National Park System Advisory Board and designated by the Secretary of the Interior in accordance with the Historic Sites Act of 1935 and the National Historic Preservation Act of 1966.

Designation as a National Historic Landmark automatically places a property in the National Register of Historic Places, if it is not already so listed, and extends to it the safeguards and benefits provided by the National Historic Preservation Act of 1966 and other Federal laws protecting historic properties.

Each Landmark is eligible to receive one bronze plaque to commemorate the property's designation. The owner(s) will shortly be contacted by a National Historic Landmarks coordinator for their area about applying for their plaque. If you have any questions about the plaque or the designation please contact Ms. Patty Henry of the National Historic Landmarks Survey at 202/343-8163.

We are pleased to include the Socialist Labor Party Hall on the roll of National Historic Landmarks as significant representatives of our Nation's heritage.

Sincerely,

Carol D. Shull
Chief, National Historic Landmarks Survey and
Keeper, National Register of Historic Places

NATIONAL HISTORIC LANDMARK NOMINATION

NPS Form 10-900

USDI/NPS NRHP Registration Form (Rev. 8-86)

OMB No. 1024-0018

SOCIALIST LABOR PARTY HALL

Page 1

United States Department of the Interior, National Park Service

National Register of Historic Places Registration Form

1. NAME OF PROPERTY

Historic Name: SOCIALIST LABOR PARTY HALL

Other Name/Site Number: Old Labor Hall, S.L.P. Hall, Socialist Block, Granite Street Hall, Socialist's Hall, Socialist Labor Building

2. LOCATION

Street & Number: 46 Granite Street Not for publication: ___

City/Town: Barre Vicinity: ___

State: VT County: Washington Code: 023 Zip Code: 05641

3. CLASSIFICATION

Ownership of Property

Private: ___
Public-Local: X
Public-State: ___
Public-Federal: ___

Category of Property

Building(s): X
District: ___
Site: ___
Structure: ___
Object: ___

Number of Resources within Property

Contributing

1

1

Noncontributing

___ buildings
___ sites
___ structures
___ objects
0 Total

Number of Contributing Resources Previously Listed in the National Register: 1

Name of Related Multiple Property Listing: N/A

Designated a NATIONAL HISTORIC LANDMARK on

MAY 16, 2000

by the Secretary of the Interior

SOCIALIST LABOR PARTY HALL

United States Department of the Interior, National Park Service

National Register of Historic Places Registration Form

4. STATE/FEDERAL AGENCY CERTIFICATION

As the designated authority under the National Historic Preservation Act of 1966, as amended, I hereby certify that this ___ nomination ___ request for determination of eligibility meets the documentation standards for registering properties in the National Register of Historic Places and meets the procedural and professional requirements set forth in 36 CFR Part 60. In my opinion, the property ___ meets ___ does not meet the National Register Criteria.

Signature of Certifying Official

Date

State or Federal Agency and Bureau

In my opinion, the property ___ meets ___ does not meet the National Register criteria.

Signature of Commenting or Other Official

Date

State or Federal Agency and Bureau

5. NATIONAL PARK SERVICE CERTIFICATION

I hereby certify that this property is:

___ Entered in the National Register

___ Determined eligible for the National Register

___ Determined not eligible for the National Register

___ Removed from the National Register

___ Other (explain): _____

Signature of Keeper

Date of Action

SOCIALIST LABOR PARTY HALL

United States Department of the Interior, National Park Service

6. FUNCTION OR USE

Historic: Social Sub: Meeting hall
Civic

Current: Social Sub: Meeting hall
Civic
Recreation and Culture Museum

7. DESCRIPTION

ARCHITECTURAL CLASSIFICATION: No Style

MATERIALS:

Foundation: Granite
Walls: Brick
Roof: Asphalt shingles
Other:

SOCIALIST LABOR PARTY HALL**Page 4**

United States Department of the Interior, National Park Service

National Register of Historic Places Registration Form

Describe Present and Historic Physical Appearance.

Barre's Old Labor Hall sits on a half-acre parcel located at 46 Granite Street in the historic downtown of Barre, Vermont. The building consists of a long single-story gambrel-roofed hall and a two-story flat roofed section at the front that contains five rooms. Arranged on a northwest axis, the 50' x 108' rectangular brick structure is constructed in running bond and sits on an exposed half-story brick basement. The building has a granite foundation at ground level and a wide molded-wood cornice along the roof line. The building also contains a large attic directly above the meeting room.

The front section of the Hall measures 50' x 25'. The mass of this section above the basement level is arranged into seven bays, two piles deep and two stories high. All of the fenestration at the first and second story level of the building is 1/1 sash windows with segmental arch windows and segmental brick lintels. The windows at the basement level are three pane sash divided by vertical muntins with segmental arches.

Northwest Elevation. The **main facade** of the building faces northwest. The center entrance is reached by means of eight large granite steps and is composed of a double-leaf, five-panel wooden door with a four-pane segmental fanlight. Above the fanlight is a double-coursed brick arch springing from corbeled brick imposts. Directly above the fanlight is a granite medallion depicting the symbol of the Socialist Labor Party in bas relief: an arm and hammer above the letters "S.L.P."

At the basement level, near the outside walls are two bricked-in openings where plate-glass storefront windows originally were, one on each side of the building. Next to these bricked-in spaces, to either side of the entrance steps, are small granite steps that lead down to doorways at the basement level. Between the basement doorways and the entrance stairway is a small, rectangular opening that has been boarded over.

Southwest Elevation. The southwest facade can be divided into three portions: the area located on the two-story section of the building and the rear gambrel-roofed area that is divided evenly by a chimneystack. The southwest facade of the front portion of the building contains a pair of basement windows with two sets of sash windows above, one set at each floor level. Southeast of this area is a sheltered loading dock added some time after 1937, when the building was converted into a warehouse. The roof of the loading dock begins where the two-story part of the front building ends and terminates at the chimneystack. The concrete loading platform stands about four feet off the ground and extends out from the building about four feet. This platform is accessed by a set of steps located at the northwest end which partially covers a basement window opening. Opening onto the platform are two wide wooden doors. Each door has two rows of four lights at its upper section and a series of four vertically-oriented panels below this. There are two window openings in this area, one located above the loading dock stairs and the other next to the chimneystack.

To the far side of the chimneystack is a brick wall with two window openings that have been bricked in sometime after 1937. One of these openings is located approximately five feet from the chimneystack and the other is approximately five feet from the end of the building.

SOCIALIST LABOR PARTY HALL**Page 5**

United States Department of the Interior, National Park Service

National Register of Historic Places Registration Form

Between these two areas is a boarded-over doorway. At the basement level are two boarded-over openings, one directly below the filled-in end window and the other approximately two feet past the chimneystack.

Southeast Elevation. The southeast elevation is the rear gambrel end of the building. In the gambrel area of the facade are centered two sash windows. At the first-floor level are five evenly-spaced bricked-in windows. The middle window is slightly off-center to the northeast. The five basement bricked-in windows are centered with the windows above.

Northeast Elevation. The northeast facade is made up of a series of window openings, some of which have been bricked in. The front portion of the Hall is the mirror image of its composition on the southwest elevation. There are seven evenly-spaced windows on the gambrel portion of the building. The four southeast openings have been bricked in. The seven basement windows on this portion of the facade are located unevenly throughout the wall plane and fall just out of center with the windows above.

Interior. The interior of Barre's Old Labor Hall is divided into roughly three sections: the two-story front section of the building, the main meeting room area in the rear portion of the structure, and the basement. The measurements given here are estimated to the nearest foot. Recent restoration work throughout the main floor and second-story rooms of the Hall have enabled the removal of many non-historic materials, including plywood paneling, cooling equipment, insulation materials, partitions, and a drop ceiling.

In addition to the building's main meeting room--the principal feature of the Hall--the five smaller rooms in the front section served as offices, cloak rooms, classrooms, and a gathering place for small parties. In one of the upstairs rooms, a curved wooden stage exists which probably served as a podium for lecturers and as a platform for musical ensembles. Beside the glass ticket-window, which was located just inside the entry hall, there was a lead-lined storage space for cold beverages that was constructed at a later date in a corner of the main meeting room. The low ceilinged basement that housed the co-operative store and butcher shop was simply constructed with sturdy shelves and bins and handsome recessed windows to afford maximum natural light. Graduate students in the University of Vermont's Historic Preservation program have been engaged in analysis of the historic color schemes inside the Hall. The earliest combinations appear to have been boldly-colored and highly decorative, including stenciled patterns, marbled surfaces, and bold stripes.

The **first floor** plan of the Labor Hall is made up of two areas: the front rooms and entrance comprise one area and the meeting hall to the rear the other. The stair hall measures 10' x 18' and is accessed from the outside through the double-leaf wooden main door. The hall contains a stairway leading upstairs along the southwest wall and a doorway that accesses the northeast room. The stair hall flows into the southwest room through a large opening in the wall which once contained a door. Immediately beside this doorway is an interior window opening which represents the original ticket window. The glass pane with its semicircular opening in the base for exchanging tickets and money has been preserved and will be reinstalled in its original location during ongoing restoration of the Hall. A southeast door opens into the meeting hall

SOCIALIST LABOR PARTY HALL

United States Department of the Interior, National Park Service

National Register of Historic Places Registration Form

and a door behind the stairs leads to the basement. The ceilings in the entrance and two front rooms are nine feet high.

The **northeast room** is 19' x 25' and retains much of its original fabric. The main architectural elements in this room include its maple flooring, pressed-tin ceiling, bead-board dado, windows, and plaster walls. There are three windows on the northwest wall and two on its northeast wall. All of the windows on the first and second floors of the building are 1/1 sash windows with flat stock trim. A modern door has been added to the southeast wall to provide access to the meeting room.

The **southwest room** is 17' x 25' and has undergone some change over time. Modern wall paneling (craftwall) and ceiling materials have recently been removed to reveal the original plaster surfaces. There are three windows on the northwest wall and three on the southwest wall. A doorway that opened onto the meeting room has been enlarged to approximately eight feet wide. A small 4' x 4' restroom is located in the northeast corner of the room. The massive McNeil and Urban safe purchased in 1904 for the cooperative store still occupies a corner of the room, having been rediscovered during the removal of a false wall.

The **meeting room** occupies the southeast portion of the structure and measures 48' x 83' with 13' ceilings. A 9' x 14' room which once served as a refreshment stand and later as an office, was constructed at some time in the north corner of this space. On the southwest elevation, two large freight doors open out onto a loading platform.

Much of the historic fabric of the main meeting room remains having been encapsulated by a drop ceiling, partitions and false walls in some locations. The main architectural elements of this space include the engaged decorative posts and beams, the maple flooring, windows and beadboard dado and plaster walls and ceilings. The engaged posts and beams are nonstructural and run at 12' intervals along the length of the meeting room. The dado wraps the lower portion of the post, with the remaining area of the post covered in plaster. At ceiling height it meets a boxed beam constructed of beaded board and flat stock. These beams span the width of the Hall. On some of the posts are the remains, completely intact, of the decorative scheme they were painted in. This pattern consists of a bluegray on the dado, brown on the chair rail, and a type of grained finish on the plaster part of the post. Just above the dado and below the beam on the post are stencils applied in gold finish. On a few areas of the wall surfaces are remnants of earlier finishes, including stenciled ornament and painted patterns. The original mirrored chandelier has been placed in storage and will be restored and repositioned in the Hall.

On the **second floor** of the front portion of the building are three rooms, one occupying the area northeast of the stairs, and two rooms to the southwest side. All have been remodeled with drop ceilings and craftwall, but visible behind these layers is evidence of earlier decorative schemes, including moldings and stenciled patterns. The northeast room is 28' x 25' with four windows on the northwest wall and two on the northeast wall. The southwest room is 18' x 13' and has three windows on its northwest wall and one on its southwest wall. Southeast of this room is a 15' x 12' room. The window on the southwest wall has been closed up.

SOCIALIST LABOR PARTY HALL

United States Department of the Interior, National Park Service

National Register of Historic Places Registration Form

The **attic** is unfinished, except for wooden flooring that has been installed in the front portion nearest to the entrance. Exposed ceiling joists infilled with fiberglass insulation bats extend to the rear wall where a pair of windows open out over the southeast elevation. Huge timber trusses support the roof of the Hall.

The **basement** at one time contained a cooperative food store and a butcher shop with a brick party-wall running the length of the structure and dividing it roughly into halves. At the northwest end a stairway between the stores allowed access to the upper floor. Each store had an outside entrance and large plate-glass window at its northwest end. The windows have been bricked over. The windows that run along the northeast and southwest walls are three-pane single sash set into recessed surrounds, a few of which have been bricked shut. The northeast room is 18' x 73' with two smaller rooms to its southeast, one 18' x 25' and the other 13' x 10'. The southwest area is 27' x 108' and is divided into five rooms by brick partitions along its length. Each space is approximately 27' x 20'. The remaining original fabric in these rooms includes the low tin ceiling, window sash, beaded-board dado., plaster walls, and the narrow tongue and groove maple flooring which appears to have been laid directly over the silt left behind by the Flood of 1927.

Writing about his visit to Barre in November, 1900, to dedicate the Labor Hall, Camillo Cianfarra, editor of *Il Proletario*, the Socialist Labor Party Italian weekly, described the building:

The construction is very beautiful. The facade, with a large flight of steps, is all of stone and red brick, with a large and majestic entrance, over which in the near future will be installed the big symbol of the S.L.P., the work of comrade [Egidio Dunghi].

The Hall is enormous, all illuminated by electric light, with a vast stage, wide and completely adjustable for theatrical events, and with all the necessary amenities to make the place attractive and comfortable.

To sum up, the place is a success, and we hope that it will fulfill the purpose for which it has been built.¹

The interior and exterior of the SLP Hall in Barre, Vermont appear to have retained a high degree of integrity. Subsequent uses since the late 1930s have added materials, such as a drop ceiling, that once removed revealed the intact architectural features as well as other associated furnishings, such as the ca. 1904 safe. Current efforts to rehabilitate the SLP Hall are being conducted in close consultation with the Vermont State Historic Preservation Office and are designed to meet the Secretary of the Interior's Standards for rehabilitation.

¹"From New York to Barre (Notes from a Journey)," *Il Proletario*, December 8, 1900.

SOCIALIST LABOR PARTY HALL

United States Department of the Interior, National Park Service

National Register of Historic Places Registration Form

State Significance of Property, and Justify Criteria, Criteria Considerations, and Areas and Periods of Significance Noted Above.

Barre's Socialist Labor Party (SLP) Hall is nationally significant under NHL Criterion 1 for its association with socialist and anarchist politics, labor organizations, and Italian immigrant heritage in the early twentieth century. Barre, Vermont, was a leading place in which debates among anarchists, socialists, and union leaders took place over the future direction of the labor movement in America. The Socialist Labor Party Hall was the site for many of these debates and serves as an emblem of this radical heritage and the strength of the union movement during the early twentieth century. It is the only building known to have been erected by members of the SLP—the first national socialist political party in the United States—as a physical representation of the party's goals and aspirations. A multi-ethnic gathering place for socialists, anarchists, and unionists, the hall also provided a variety of community services.²

The SLP Hall was constructed by volunteers, mainly members of Barre's large Italian community, as a meeting hall for the Socialist Labor Party. At its dedication, the SLP Hall was described as "a superb synthesis and demonstration of the collective effort of the workers joined and guided by the light of an idea."³ The entrance to the building features the Socialist Labor Party symbol above the door, a reminder of the era of ferment which characterized Barre at the time the Hall was constructed. Thus, the building was a prominent physical manifestation of the SLP's political ideology.

From 1900 to 1935, the SLP Hall served a variety of community social, political and cultural functions. The Hall served as a gathering place for Italian social and political groups, for local unions, and for various immigrant musical ensembles, as well as political rallies, masquerade balls, dances, parties, and sporting events. Many organizations used the SLP Hall as a meeting place, including the Mutuo Soccorso Society, the Italian Athletic Club, the Italian Pleasure Club, and the Granite Cutters' National Union. The Hall also housed a co-operative grocery store, then a bottling works and a bakery: coal and firewood were also available to Barre's residents. The Hall was a source of subsistence goods as well as ethnic food and other merchandise that had special importance to the immigrant population in Barre.

The SLP Hall also connected Barre's citizens with nationwide labor and political issues. The Hall was a locus for the continuous exchange of ideas in an era when such leaders of labor and political movements as Samuel Gompers, Emma Goldman, Eugene Debs, Luigi Galleani,

² Green, Archie, January 11, 2000. "This site may be the only one still standing that brought together skilled craft workers (granite cutters), mainstream trade unionists (Samuel Gompers persuasion), and dissidents (Daniel De Leon followers)." Consultation with labor historians familiar with the history of the SLP, archivists for the SLP collections at the State Historical Society of Wisconsin and with Nathan Karp, an archivist with the current SLP national office in California indicates that this hall is the only surviving property that was actually established by the party. During the early twentieth century, the national office operated at several locations in the New York City area, but never created their own establishment.

³ Camillo Cianfarra, editor of *Il Proletario*, the SLP Italian-language weekly from New York, November 28, 1900.

SOCIALIST LABOR PARTY HALL

United States Department of the Interior, National Park Service

Page 10

National Register of Historic Places Registration Form

Edmondo Rossoni, Joseph Ettore & Arturo Giovannitti, "Big Bill" Haywood, "Mother" Mary Harris Jones, and Ann Burlak ("The Red Flame") came to Barre to speak.

The Hall continued to be operated by Social Club #2 until 1936, when it became the home of the Washington Fruit Company. In recent years, it has housed the Vermont Pak Tomato Company. In 1994 bankruptcy closed the company's doors. On March 31, 1995, a campaign was launched to purchase and preserve the Labor Hall with a "Restoration Celebration Dinner" attended by over 200 people. On July 28, 1995, the Barre Historical Society, in partnership with the City of Barre, purchased Barre's Old Labor Hall.

The direct association of this property with the Socialist Labor Party, the labor movement, Italian immigrants, and their social and political ideals, makes Barre's Old Labor Hall a unique symbol of an era in American labor and political history that is little remembered today. That it is located in a small community in Vermont not far from the Canadian border is significant, for it demonstrates that Barre, with its large Italian colony, served as a rural refuge for noted labor leaders including Luigi Galleani and Emma Goldman, who faced persecution because of their political views. Barre played host to some of the key figures in the international labor and political movements of the early 20th century, and became an outpost for radical politics at a time its proponents were coming under increased attack.

Labor historians are united in their assessment of the national importance of Barre's "Old Labor Hall" to the history of immigration, radical politics, and labor history. As labor historian Archie Green has written, "By good fortune, the Hall holds a symbol of the diverse elements that joined hands in the American labor movement—a work force of native New Englanders uprooted from agriculture to industry, foreign-born immigrants, exponents of both radicalism and pragmatism, [and the] tragic events of industrial death and disease."⁴

From Brown University, Socialist Labor Party authority Paul Buhle states that "The Hall brings back to mind labor at the turn of another century, miserably poor but so idealistic that a poem usually appeared on the front page of the radical, socialist, or anarchist papers, calling the reader to something beyond bread and butter. Barre's traditions embodied in the hall recall the struggles of the immigrant, not only for self-improvement (or even collective ethnic advance) but for universal values hardly realized in Social Security and health programs generations later."⁵ Buhle believes that the Barre building is the best (perhaps only) surviving property associated with the Socialist Labor Party.

The SLP Hall has important associations in the history of Italian immigration. "For the immigrants workers and their families around Barre, it was the center of a thriving community life that bridged the old world and the new, a symbolic and practical focus of how workers could create for themselves a civil environment that was both useful to their daily lives and

⁴Green, Archie, January 11, 2000.

⁵ Buhle, Paul, n.d.

SOCIALIST LABOR PARTY HALL**Page 11**

United States Department of the Interior, National Park Service

National Register of Historic Places Registration Form

uplifting of their spirit.”⁶ Immigration historian Rudolph Vecoli noted that: “The SLP Hall embodies the conjuncture of a number of major historical developments of the twentieth century: immigration; industrialization and technological change; class conflict; radical ideologies and movements; and ethnic and cultural diversity.” In addition, Vecoli states that the SLP Hall and its Italian immigrant constituents have been the subject of important studies by several Italian historians interested in the transformation of Italian culture in America.⁷

Columbia University historian Eric Foner concludes with: “Barre plays a central role in the history of Italian anarchism and militant unionism in this country. And the SLP Hall offers an excellent opportunity to bring to bear the insights of the new social and labor history on the interpretation of an existing building and community, and to highlight one part of the still neglected history of radical movements in American society.”⁸

Representation of American labor history is at present limited within the National Historic Landmarks Survey primarily to the homes of important labor leaders (Samuel Gompers, Eugene Debs, Kate Mullany, Terrence Powderly); the sites of significant labor actions (Botto House and the Matewan District); or commemorative sites (Union Square and the Haymarket Martyrs’ Monument). Only one union headquarters—the American Federation of Labor (AFL) building in Washington, DC—has been designated thus far.⁹ The SLP Hall illustrates an aspect of American labor history that is not currently represented in the NHL Survey and this property appears to be a rare example of a site with national historical associations and high integrity.

Karen Lane summarized the site’s significance in a recent *Labor’s Heritage* article :

Barre’s Labor Hall serves as an example of other twentieth-century union halls, labor temples, and working class meeting places of all shapes and sizes out of which came the leaders, ideas, and energy that helped shape the century. It is a labor icon that has been saved from destruction and preserved for future generations as an interpretive site and community center. The direct association of this property with the labor movement, with Italian immigrants, and with their social and political ideals, makes Barre’s Old Labor Hall a unique symbol of an era in American labor history that is but little remembered today.¹⁰

⁶ Cannistraro, Philip V., January 12, 2000.

⁷ Vecoli, Rudolph J., January 5, 2000.

⁸ Foner, Eric, January 15, 2000.

⁹ *List of National Historic Landmarks by State*. National Park Service, 1999.

¹⁰ Lane, Karen, “Old Labor Hall, Barre, Vermont,” *Labor’s Heritage*, Vol. 10, 1993.

SOCIALIST LABOR PARTY HALL

United States Department of the Interior, National Park Service

National Register of Historic Places Registration Form

NARRATIVE HISTORY**Origins of the Granite Industry in Barre, Vermont**

The town of Barre sits at the headwaters of the Winooski River in the rugged hills of central Vermont, about 7 miles east of Montpelier, the state capitol. Mountains encircle the village, forests stretch for miles in all directions, and farms hug the steep hillsides or crowd strips of fertile ground near rivers and streams. Over 100 million years ago, molten rock pressed upward from beneath the earth, forming the Green Mountains of Vermont. In the hills surrounding Barre, the lava was trapped below the surface, forged into granite by the intense pressure.

Barre granite is valued for its uniform color, its hardness, its durability and its mirror-like shine when polished. Feldspar gives the stone its light gray color, mica its sparkle, quartz its strength, and silica its polished shine. But silica also represents a danger to those who labor to cut and shape the stone, for it lacerates the lungs of the workers.¹¹

Granite was first quarried in central Vermont in the early 1800s, but moving the heavy stone made necessary teams of up to 20 or 30 oxen or mules, and took many days. So Barre remained a quiet marketplace for farmers and a way station for travelers until the arrival of the railroad in 1875. Direct access from the quarries to rail transport in 1888 opened Barre's granite works to new markets across America and transformed the little farm village into a small industrial city. The population rose from 2,060 in 1880 to 6,812 a decade later. Barre expanded its operations from quarrying to include finishing and carving stone during the 1890s, thus increasing the need for skilled artisans. By 1902, there were 68 granite quarries in operation with an annual output of 1.5 million tons and employing over 1,500 cutters.¹²

Barre's Immigrant Workforce

Scottish quarriers from Aberdeenshire arrived in Barre beginning about 1880, bringing with them a strong commitment to organized labor. Although some of the Scots were skilled granite finishers, their greatest strength was as quarrymen, and many of the quarry terms still used today are Scottish in origin, particularly "grout," which denotes the huge piles of granite waste seen all about the quarries.

Skilled artisans from the north of Italy were the next to come to Barre, bringing with them social and political ideals that had their roots in the Italian experience. Many were highly-educated stoneworkers who had studied sculpture and design in the fine arts academies at Milan, Brera, or Carrara. Italians from the prosperous northern provinces of Lombardy, Piedmont, and Tuscany and from Italian-speaking southern Switzerland and Austria first arrived in Barre about 1890. The political reality of life in the region from which they came was that of turbulence and a rich mixture of competing ideas, parties and movements, including anarchists, socialists, and syndicalists of many varieties. Most of the emigrants

¹¹ Rogers, Betty, *Blood of Barre: Portrait of the Granite Industry*, 1979

¹²Slayton, F.C., "Vermont Quarrying", n.d.

SOCIALIST LABOR PARTY HALL

United States Department of the Interior, National Park Service

National Register of Historic Places Registration Form

chose to leave their homeland for economic reasons, but for many it was also to avoid the draft.¹³

The confluence of these two principal ethnic groups with their specialized training and background in organized labor or politics led to early unionization in Barre, so that by the year 1900, 90 percent of all jobs in the city were organized. Barre began the 20th century as a union town and as a boomtown, for the population had increased five-fold in a single generation, from 2,060 in 1880 to 10,734 in 1910. Immigrants flooded the town from all over Europe. Skilled granite workers left the granite districts of Denmark, Norway, Sweden, and Finland as well as those of Scotland, Switzerland, Austria, and Italy to enrich the workforce of Vermont's granite industry.

Once in Barre, the immigrant laborers found multiple avenues toward success. Due to the skill involved and the health and safety hazards, Barre granite workers were some of the most highly paid in the country. Owners of finishing plants as well as their workers were almost exclusively immigrant Scots or Italians; men who had started as laborers owned or had established all of the finishing plants in Barre.

Socialists and Anarchists in Barre

The Socialist Labor Party was founded in April 1876 in Pittsburgh, Pennsylvania and was the first socialist political party with a national scope in the United States.¹⁴ From the beginning, the SLP was a "multiethnic, immigrant working-class coalition. Perennially weak at the national center, it set down hardy roots locally."¹⁵ The party was at its height in the 1890s after some political success in national elections—in 1892 it ran the first Socialist presidential campaign. However, adoption of Daniel DeLeon's philosophy that the primary function of unionism was to overthrow capitalism, resulted in many members—after 1900—joining the less militant Socialist party founded by Eugene V. Debs.¹⁶

The Socialist Labor Party brought the anarchists and socialists of Barre together, and provided an additional forum for Scots and Italians to join one another in the promotion of union

¹³ Pironi, Peter, Letters to Ben Collins, January 22, 1975 and February 10, 1975

¹⁴ Girard, Frank and Ben Perry, *Socialist Labor Party 1876-1991, A Short History*, p. 3

¹⁵ Paul Buhle, "The Socialist Labor Party," in *Encyclopedia of the American Left*, pp.711-716. Ironically, the SLP was criticized in the 1890s by Frederik Engels for its immigrant makeup. Engels thought that to be successful, the party would have to become "out and out American." Socialist Labor Party, "Who Was Daniel De Leon?"

¹⁶ *Dictionary of American History*, V, p. 110-111. Though the party's greatest strength was among German-Americans and Eastern Europeans, it attracted a group of Italian immigrants in Pittsburgh, who founded the newspaper *Il Proletario* in 1896. The paper's editors included many notable Italian socialists, among them Camilo Cianfarra (1900), Giacinto Menotti Serrati, Carlo Tresca (1904-1906), Arturo Giovanitti (1912), and Edmondo Rossoni (1915). Many of the accomplishments of the Socialist Labor Party in Barre were chronicled in *Il Proletario*.

SOCIALIST LABOR PARTY HALL

United States Department of the Interior, National Park Service

National Register of Historic Places Registration Form

activities and political activism. The SLP was the most important radical political organization in Barre, as both Italians and Scots found its appeal to immigrants especially compelling.

More mainstream Socialists--of the Eugene V. Debs variety--also played a leading role in Barre politics. Notices announcing socialist gatherings in Barre appear as early as 1895 in the newspapers of the day.¹⁷ Unlike the SLP, Barre's Socialist Party was made up primarily of Yankees and Scots. In fact, Barre citizens elected Vermont's first socialist mayor, Robert Gordon, in 1916.

Historian Paul Avrich, an expert in the SLP, has noted that one of the earliest anarchist groups in New England was established in Barre in 1894. "Its members," he writes, "were stone and marble cutters from Carrara and other northern Italian towns, who had virtually transplanted their way of life to the United States, following the same occupations, customs and beliefs as they had in the old country."¹⁸ The political radicalism of the Italians played an important role in shaping both union activity and politics in Barre.

The most famous anarchist in Barre was the singular polemicist Luigi Galleani (1861-1931), who "was the leading Italian anarchist in America" during the first two decades of the twentieth century. On June 6, 1903, Galleani launched *Cronaca Sovversiva*, "the mouthpiece for his incendiary doctrines and one of the most important and ably edited periodicals in the history of the anarchist movement."¹⁹ An advocate for violent overthrow of authority, Galleani's followers attempted several acts of terrorism across the country, which resulted in the Red Scare. Barre's radicals welcomed other leading anarchists as lecturers and guests, including Emma Goldman, who gave a series of four lectures on social problems in 1899.²⁰

¹⁷ *Barre Enterprise*, 1895.

¹⁸ Avrich, Paul, *Anarchist Portraits*, p.168.

¹⁹ Avrich, Paul, *Anarchist Portraits*, p. 167-168. Because of his radical activities, Galleani had been exiled for more than five years to the island of Pantelleria off the coast of Sicily, escaping from there and making his way to Paterson, New Jersey, in 1901. During a strike in June 1902, Galleani was wounded in the face and escaped to Canada, and when he had recovered, "he secretly recrossed the border and took refuge in Barre, Vermont, living under an assumed name among his anarchist comrades, who regarded him with intense devotion." In 1907 Galleani was arrested in Barre, extradited to New Jersey, tried and acquitted. He returned to Barre, where he continued to edit and publish *Cronaca Sovversiva* until 1912, when he relocated to Lynn, Massachusetts.

²⁰ Goldman, Emma, *Living My Life, Vol. I*, p. 238. In her autobiography, Goldman pointed out that the municipal government prevented her from holding the fourth and final meeting, because she was considered dangerous. *Cronaca Sovversiva*, March 2, 1907, p. 4. While in Barre, Goldman met Galleani. On her return to Barre in February, 1907, she and Galleani appeared together before a crowd of 500 at the opera house. "Even after the Anarchist movement faded, for a long time a few of them [in Barre] still wore the black semi-bow tie that was their badge." Pironif, Peter, Letter to Ben Collins, January 22, 1975.

SOCIALIST LABOR PARTY HALL

United States Department of the Interior, National Park Service

National Register of Historic Places Registration Form

Building the Socialist Labor Party Hall

The Socialist Labor Party Hall is located in the heart of downtown Barre, in a quiet neighborhood made up of granite manufacturers, machine shops and small residences. Located just a few steps away from North Main Street, Granite Street forms the boundary of Barre's immigrant community, the "North End." With its blend of residential and commercial buildings, Granite Street clearly represents the kind of growth and change that has transformed Barre from a rural agricultural village to a bustling industrial city.

In her book *Santander to Barre—Life in a Spanish Family in Vermont*, Elisabeth Ramon Bacon describes her childhood on Granite Street. She calls up images of a lively, culturally diverse community where the day's routine was governed by the noise of granite shed whistles, and where ethnic foods from bread to meat were delivered door to door. Even today, the tiny yards of the modest homes still situated on Granite Street contain huge fruit trees—evidence of the celebrated self-sufficiency of the Italian and other immigrant residents who called the street their home.

Volunteer Italian granite workers built the SLP Hall in Barre to provide a setting for implementing many of the ideals of the Party, and for maintaining the cooperative traditions of Italian immigrants. According to municipal records, one reason given for establishing the SLP Hall was to house a cooperative store that would offer its members "produce, merchandise, goods, articles, and commodities."²¹

Work began on the Hall in the summer of 1900. Through the efforts of the volunteers, the Hall was constructed in a comparatively short time. "The labor was done by members in off-work hours, and the brick and carpentry work were hired out."²² Local materials were used for the construction of the Hall: Barre's own gray granite supplied the foundation stones, window sills, steps, and especially the superb medallion above the entrance. Soft red bricks from the Drury brickworks in nearby Burlington make up the exterior walls. Local lumberyards were the likeliest source for the wooden lath, flooring, dado and trim.

²¹ Records of the City Clerk, Barre, Vermont, *Articles of Association of the Co-operative Association of Consumption*, November 6, 1901. The Italian immigrants established the SLP Hall for the public good. The owners specified that the property could only be used for: Italian consumers, producers' or workers' cooperatives, erection of low-income housing, an Italian hospital, or other useful purpose.

²² Pironi, Peter, Letter to Ben Collins, January 22, 1975. Ironically, the contractor J.E. McGue, was accused of hiring non-union laborers for some of this work. According to one report, the GCNU threatened to back out of its agreement to rent the Hall when word spread that non-union workers may have been involved in the building's construction. *Barre Evening Telegram*, November 19, 1900. "It seems that the Granite Cutters National Union agreed to rent the hall and offices from the proprietors of the building, but yesterday a committee of two from the GCNU waited on the SLP and informed them that they could not be held to their agreement, as they had been informed that the building had been put up by scab laborers. J. E. McGue . . . was most emphatic in his denial of the report, stating, 'Having heard that non-union men have been employed by me in erecting the Socialist Labor building on Granite street, I wish to contradict the report most emphatically and state that none but union laborers have been employed.'"

SOCIALIST LABOR PARTY HALL

United States Department of the Interior, National Park Service

National Register of Historic Places Registration Form

Page 16

Barre's Old Labor Hall was dedicated on November 28, 1900. "There were nearly 700 Italians [who] attended the opening of the Socialist Labor hall on Granite Street. As early as 7 o'clock the hall was crowded and at 8 o'clock there was standing room only. This was to hear the lecture by Camillo Cianfarra, editor of *Il Proletario*, on 'What is Socialism.'²³ During his talk, he remarked on the character of the people of Barre, calling them: "Those good stonecarvers, with their faces so open and sincere, with honest smiles, and with good and generous hearts."²⁴ According to the local newspaper, "After the lecture a pleasant time was spent and then dancing was indulged until a late hour in the morning."²⁵

On his return to New York City, Cianfarra wrote of his visit to Barre in an editorial entitled *From New York to Barre (Notes from a journey)*, which he filled with humor and admiration:

As the comrades from other countries know, the Italian Socialist Section of Barre has built a Hall for the grand sum of 7,000 dollars, most of which has already been paid. That which at first would have seemed impossible has been accomplished, and the Hall stands now on Granite Street, a superb synthesis and demonstration of the collective effort of the workers joined and guided by the light of an idea like ours. To many, perhaps, this Hall will mean nothing, for many others, it will be the subject of jokes; but to me, when I saw it for the first time, it spoke in a language full of wisdom. Who, but a few years ago, would have imagined a thing like this: What would the great patriots of New York think of it if they should have the opportunity to see it?

A year ago I believed this project of the comrades of Barre was just a utopian dream, and the patriots would say perhaps that the Hall is destined to fail. But when I saw the devotion with which our comrades were working there, I became convinced that for many years the Hall would have significance as the fruit of the judicious activity of our comrades, and that in the Hall many would awaken from the long hybernation in which they have lain, and many consciences will be revolutionized."²⁶

Labor Unions and the SLP Hall

From the quarries on the hills above, Barre granite was extracted and hauled to manufacturing plants in the village below to be shaped and polished. Conditions in the Barre granite industry were far from ideal, for the work place was inherently dangerous, the back-breaking work was done in bitter winter weather, the pay was low and the opportunities limited for the quarry workers. Hand quarrying gave way to pneumatic tools at the turn of the century, but the new machines produced clouds of deadly silica dust that infected the lungs of the granite workers.

²³ *Barre Evening Telegram*, November 30, 1900.

²⁴ *Il Proletario*, December 8, 1900.

²⁵ *Barre Evening Telegram*, November 30, 1900. *Boston Sunday Herald*, March 12, 1905. Some of the events at the SLP Hall ended in violent confrontations: just a few weeks after the Hall was formally dedicated, trouble developed during a dance held in the building and City Police Chief Patrick Brown was shot by several men who emerged from a darkened doorway. An anarchist by the name of Arturo Barnacci was arrested and sentenced to 21 years for the incident.

²⁶ *Il Proletario*, December 8, 1900.

SOCIALIST LABOR PARTY HALL

United States Department of the Interior, National Park Service

National Register of Historic Places Registration Form

Page 17

In 1886, the skilled carvers, cutters and polishers formed the Barre branch of the Granite Cutters' National Union (GCNU – later the Granite Cutters' International Association or GCIA), which by 1900 had become one of the largest chapters in the American Federation of Labor (AFL) with over 1,000 members. The less skilled quarrymen, led by the Scots, established the Quarry Workers International Union (QWIU) in 1903, and Barre served as the union's national headquarters.²⁷

As early as March of 1901, the GCNU had established their offices in the Socialist Labor Hall and held their meetings there. Cornelius Granai, who later in life was a professional baseball player, then a lawyer, Mayor of Barre and state representative, joined the industry in 1907 at the age of ten as a tool grinder. He spoke of the pay he received to help support his struggling parents: as little as one or two cents per hour. It wasn't hard for such boys and men to see the need to organize, said Granai: "if you weren't a union man, you were a helpless idiot!"²⁸

The union movement was so strong in Barre that while most of the American labor movement struggled for recognition, Barre unions had the nine-hour-day and closed shops. The prevailing wage was superior to most other industrial communities. The unions also were partially successful, at least early on, at controlling the introduction of technological innovations that threatened jobs and health. One contemporary source noted that "as a consequence" of this high level of unionization, "Barre sets the national pace in union standards."²⁹

While the Italians dominated the membership of the Granite Cutters' Union, the Scots held the positions of power within the union. Disputes during negotiations over the adoption of the "American Plan" caused a rift within the GCNU that lasted many years and weakened the union, just when it needed solidarity in the face of challenges to its legitimacy and patriotism during World War I. A post-war depression in the granite industry added to the appeal of the open shop for manufacturers, as it meant they could reduce wages for workers and not be

²⁷ Barre, Vermont: *An Ethnic Bouillabasse*, 1978

²⁸ Rogers, *Blood of Barre*, 1979

²⁹ Sartwell, David, *Aspects of Berre History to 1940: A Preliminary Investigation*, 1967. p. 51. In 1909 workers launched a successful strike over the introduction of the "bumper," a jackhammer device very injurious to the user both because of the amount of granite dust it created and the violence with which it shook. The strike settlement was reached after about 3 months time and imposed several restrictions on the use of the bumper. The machine was soon abandoned in the industry. Slayton, "Vermont Quarrying."

SOCIALIST LABOR PARTY HALL

United States Department of the Interior, National Park Service

National Register of Historic Places Registration Form

bound by union contracts.³⁰ Due to these setbacks, by the late 1920s Barre was no longer a leader in the American labor movement.

Illustrating a national union trend towards workers' health and safety issues, the GCNU established a silicosis clinic at the SLP Hall during the 1920s to provide medical services in addition to the limited company-sponsored programs.³¹ In good times and bad, remembered C.O. Granai, "what brought them together was the cemetery," referring to the untimely deaths of many quarry cutters and carvers, who after years of working in the quarries and inhaling silica dust died of silicosis. The late Pace Nicolino, whose father Natale Cardini was a prominent local anarchist, recalled why there is no monument in the local cemetery to commemorate his father's life: "He said he didn't want anyone eating out their lungs for him."³² Not until 1936 were the first suction devices installed in the sheds by the manufacturers to rid the air of the deadly silica dust. Soon wet-drilling was introduced at the quarries. The impacts of silica dust were felt for many decades to come.³³

Conditions during the Great Depression united union and non union workers in Barre. During a 1933 strike, which lasted 6 months, a commissary for needy strikers was set up at the Labor Hall. The union members held their ground and the manufacturers, faced with financial disaster, reconciled their differences with the union and restored wages along with the right to collective bargaining. By the beginning of World War II the unions had again asserted themselves as the dominant power in the local economy.³⁴ Recalling this era of strife fifty years

³⁰ Painter, Nell Irvin, *Standing at Armageddon: the United States, 1877-1919*, pp. 381-390. In 1915, workers waged a strike over working conditions and pay. As settlement loomed, the Italians opposed the Scots' plan for a secret ratification vote, desiring instead an open election. Balloting was to take place at the Barre Opera House, and as the vote was about to be taken, a group of Italian militants formed a phalanx and seized the ballot box, which they carried in triumph down Main Street. The American Plan was an attempt by management, following World War I, to undermine union strength by ending collective bargaining and other union gains. American manufacturers set out to bust the unions and proposed the "American Plan" of an open shop, in which non-union workers were hired. Companies argued that the American Plan represented a patriotic effort to make America strong following the war, for they argued that the closed shop was a tool of radical foreigners. The Espionage and Sedition Acts passed during the war, along with the Palmer Raids of 1919 and the Immigration Restriction Acts of 1921 and 1924 highlighted the nativist sentiments of much of the nation. These acts further undermined the strength both of national unions and those in Barre, which were comprised heavily of foreign-born workers.

³¹ Derickson, Alan, "Criteria for Historic Landmarks of Extractive Labor in the United States," Draft NHL Theme Study, National Park Service, Washington, DC., p. 16.

³² Rogers, *Blood of Barre*.

³³ In 1951, the Vermont legislature finally enacted a bill granting workers protection against silicosis. The tuberculosis sanitarium on Barre's Beckley Hill finally closed in the 1960s after more than forty years in operation and hundreds of deaths. Allen, Donald G., *Barre Granite Heritage with Guide to the Cemeteries*, 1997, p. 33. One notable family monument at Hope Cemetery in Barre vividly depicts the death by silicosis of a graniteworker. The poignant Brusa monument (1939) was carved by Donato Coletti from the model by Flavio Furloni. This modern pieta was inspired by the Volonte monument by Quadrelli at the Cimitero Monumentale in Milan, Italy.

³⁴ Sartwell, David, "Aspects of Berre History to 1940," p. 61.

SOCIALIST LABOR PARTY HALL

United States Department of the Interior, National Park Service

National Register of Historic Places Registration Form

later, Eddie Melvin, a native of Scotland and a lifelong union member, quoted the slogans that guided the striking men: "Join the union and be a man!" "In solidarity there is strength!"³⁵

Early Operation of the SLP Hall

Throughout the first winter the Hall was open (1900-1901), there were efforts to form a variety of groups, including a choral society, a band, Italian language classes, and so on. The late Cornelius Granai recalled the music he heard at the Hall: "They used to sing "L'Internazionale" —that's the old socialist song. I used to hear it played by the band and sung by the people in the Socialist Block down on Granite Street...so I joined them." Granai described the radical politics of the SLP as anti-monarchy, anti-clerical, and anti-padrone or anti-boss. Of the era of labor strife, when the Hall was most heavily-used, he said, "They were good times, but they were bitter times."³⁶

So popular was the new building that over 1000 members of the Italian community attended the ball and dramatic entertainment held there on Saturday, June 8, 1901. The play presented to the large audience was *Sensa Patria* by the renowned Italian anarchist playwright Pietro Gori.³⁷

The active use the Hall experienced since the time of its dedication necessitated repairs by the 1920s. The Hall was re-decorated in September 1924. According to the Barre Daily Times, "The dance hall in the Socialist block on Granite street is undergoing some much needed repairs and within a few days will be transformed into a much pleasanter assembly hall. A new sound board to improve the acoustic properties has been installed while the stage will be partly enclosed with lattice work and the sides and back covered with draperies. A gentlemen's rest and smoking room has also been provided."³⁸ In 1930, it was reported that "[t]he old floor at the Granite street hall is being replaced, a gang of workmen having started on the job yesterday taking up the well-worn floor which is being rapidly replaced with new hardwood flooring. The managers of the hall expect to open it to the public again about New Year's day with a celebration dance on the new surface."³⁹

³⁵ Rogers, *Blood of Barre*.

³⁶ Rogers, *Blood of Barre*. Numerous dances were held to benefit local widows as well as to celebrate weddings. In August of 1900 a collection of \$122 was raised for the families of strikers at Berra, Italy. In October, the Circolo di Studii Sociali held a public meeting at the hall for a discussion by Pietro Calcagni on the principles of Socialism.

³⁷ *Barre Evening Telegram*, June 12, 1901. Among the members of the cast that night was an Italian by the name of Eugenio Rispoli, who had arrived three weeks earlier from Italy and had been immediately suspected by the anarchists of being a spy. When threatened, Rispoli hid himself in the basement of Socialist Hall. His friends placed him in the hands of the police for safety until he could escape from Barre at the earliest opportunity.

³⁸ *Barre Daily Times*, September 1924.

³⁹ *Barre Daily Times*, December 23, 1930.

SOCIALIST LABOR PARTY HALL

United States Department of the Interior, National Park Service

National Register of Historic Places Registration Form

Union Co-Operative Store

The creation of cooperative organizations was one of the most important elements of Italian culture in America. The SLP became the central site in Barre for the organization of Italian cooperatives. "Importante: I soci della cooperativa sono invitati ad intervenire alla riunione che avra luogo goiveci 29 agoste alle ore 8 precise nella Sala Socialista" read the announcement in the *Barre Evening Telegram* on August 26, 1901. On November 5, the *Telegram* announced that, "For some time past a number of the householders of this city have been organizing themselves into a co-operative society for the purpose of securing their groceries at wholesale prices. They have decided to open a store this week in socialists hall, Granite street."⁴⁰

At first only groceries and dry goods were sold in the store, with a bottling works and bakery added later. Fuel (coal and wood) supplies were stockpiled for local residents. By 1902, representatives from the store were making regular trips to Boston and New York to secure goods for sale in the Italian cooperative store. The store even minted its own currency: coins bearing the arm and hammer of the SLP with the words "Cooperative Stores, Barre, VT" were produced in 5c, 10c and 25c denominations. According to a notice in the *Barre Daily Times* of August 16, 1904, the cooperative store was enjoying such an increase in business that they purchased an enormous McNeil and Urban safe, which still occupies a corner of one of the rooms in the front of the Hall.⁴¹

The Co-op was important to workers during times of economic downturn throughout the region. The organization held fund raisers and helped distribute food throughout the Depression.⁴² During the granite industry strike of 1933, free food donated by local farmers and tradesmen was distributed at the Cooperative Store to striking workers. The Cooperative continued to serve this social function throughout its existence.

Primo Maggio (May Day)

The SLP Hall also became the site of local May Day celebrations. Italians from Barre, together with Italians of nearby Montpelier and Northfield, where the granite industry was also prominent, instituted annual May Day festivities at the Hall, where the event was known as "Italian Labor Day." In 1901, the local newspaper announced that "The first of May is to be

⁴⁰ *Barre Evening Telegram*, November 5, 1901.

⁴¹ During recent renovations at the Hall, Angelo Ambrosini, whose father was a member of the co-operative and of the SLP, found a well-preserved bottle-cap in the attic of the Hall with the words "Union Co-Operative Store" printed on it.

⁴² *Barre Evening Telegraph*, December 13, 1930. "An estimated crowd in the vicinity of 600 persons gathered last evening at the Granite Street Hall for a Dance and Bazaar conducted by the Granite Cutters International Organization for the benefit of needy unemployed members of the organization.... With the heavy advance of tickets, orders for shoes, clothing and food were put in by the G.C.I.S. committee and distribution to members families where there is a lack of employment will be started at once. It is expected that the distribution will do much to help make the holiday a happier one for a great many families."

SOCIALIST LABOR PARTY HALL

United States Department of the Interior, National Park Service

National Register of Historic Places Registration Form

Page 21

celebrated all over the United States by the Socialists as labor day and the Italian section of Barre is laying plans for an extensive celebration."⁴³

Immigration historian Rudolph Vecoli explains that in the United States, May Day represented an "invented tradition" that originated during the campaigns for the 8-hour day. For the Italian working classes, Primo Maggio became the focus of their aspirations for freedom and justice, a day they celebrated with religious intensity.⁴⁴ In Barre, notices in both English and Italian signed by "I Socialisti" or "The Socialists" appeared in the local newspaper inviting all to attend the celebration at the Labor Hall. Ads announced that the celebration would include a dance, a fair and a philodramatic presentation entitled "Il Primo Maggio" written by the renowned Italian anarchist Pietro Gori.⁴⁵

The SLP Hall was not only the setting for celebrations, parties, and plays, the site also witnessed its share of the often violent clashes between political associations, unions, and lawmakers.⁴⁶ The 1912 Bread and Roses Strike illustrates the connection between Barre's political, labor, and immigrant communities with national affairs.

Bread & Roses Strike, February 1912

An example of the association of the SLP Hall with radical politics and union actions at the national level is the role of Barre citizens with the 1912 Bread and Roses Strike in Lawrence,

⁴³ *Barre Evening Telegraph*, March 12, 1901.

⁴⁴ Vecoli, Rudolph, p. 30.

⁴⁵ *Barre Evening Telegraph*, April 8, 1901. On May 1, 1901, the newspaper featured the following description: "The members of the Italian colony are observing today, May 1st, as Labor Day, it being the date selected at Chicago in 1886, and at the International Labor Congress at Paris in 1889 for such observance. At 10 o'clock this forenoon a well attended mass meeting at Socialists hall was addressed by G. Miani, Messrs. Cassi, Calcagni, and Esteve. Philip Halvosa was the last speaker, and delivered an interesting address [on "Class Conscience: United International Action by the Workers of the World"]. This evening the celebration will be continued with dancing and a dramatic presentation at Socialists hall."

⁴⁶ One of the most dramatic and tragic events in the history of the SLP Hall occurred as a result of recurrent disagreements between anarchists and socialists in Barre. In October 1903, Barre sculptor Elia Corti was fatally shot on the steps of the Labor Hall after a lecture by a prominent socialist from New York. Local Anarchists "made no secret of the fact that they intended to heckle and otherwise disrupt the talk." Corti was killed by a stray bullet during an altercation between the Socialists and the Anarchists. Pironi, Peter, Letter to Ben Collins, February 10, 1975. Corti, a native of Viggiu in northern Italy, had come to Barre in 1892. One of Barre's finest carvers, he is best remembered for having carved the panels on the base of Barre's Robert Burns Monument. Because of his prominence as a gifted granite carver, and as a man well-liked and respected in the community, public grief at Corti's death was widespread. Corti's monument, which stands at Barre's Hope Cemetery, depicts him in a traditional melancholy pose, his arm resting on a broken column which symbolizes his life cut short. Grieving stonecarvers from throughout Vermont helped to carve the base where lie his carving tools: calipers, square, hammer, chisel, pneumatic carving tool, and a palm branch, the symbol of peace. Corti's death symbolized the interlinking relationships between radical politics, ethnic heritage, and the tragedy associated with the lives of stonecutters in the granite industry.

SOCIALIST LABOR PARTY HALL

United States Department of the Interior, National Park Service

National Register of Historic Places Registration Form

Massachusetts.⁴⁷ At a meeting at the SLP Hall, where "enthusiasm existed in unbounded measure," a group of union supporters took up the cause of the striking textile workers by raising funds and providing foster homes for the worker's children during the strike. Several meetings were held in preparation for receiving the children in Barre.⁴⁸

"Thirty-five Children Are Coming" read the headline on the front page of the *Barre Daily Times*, Saturday, February 17, 1912. At five o'clock that afternoon several hundred people carrying signs that read "Help the Strikers" in both English and Italian crowded around the Central Vermont Railroad station and cheered as the train pulled into Depot Square. A band played as the children stepped from the train and joined a parade to City Hall, around a park, and down Main Street to the Socialist hall on Granite Street.

These children were the sons and daughters of factory workers in the woolen mills of Lawrence, Massachusetts. Wages in the mills were already low, and then a cut in pay led to a strike in Lawrence. Thousands of families were out of work and few had enough to eat. The strike in Lawrence quickly became national news. In addition to Barre, children were sent to live for the duration with union sympathizers in New York and Philadelphia—a fact that indicated Barre's commitment and standing among union supporters.⁴⁹ While the children were in Barre, local families welcomed them into their homes. Barre merchants donated bread, meat, milk, fruit, and candy. A city health officer examined the children and took photographs to be sent to their parents in Lawrence. The photos were printed as postcards and sold to raise funds to support the strikers.

⁴⁷ *Barre Daily Telegraph*, February 8, 1912. "Three hundred and fifty workingmen attended a mass meeting in the Socialist Hall on Granite street last night and adopted steps toward aiding the striking weavers in Lawrence, Mass. Enthusiasm existed in unbounded measure. Ten committees were appointed to solicit funds and a call for subscriptions at the meeting met with a ready response. Many workingmen gave a dollar each and in some instances the individual subscriptions mounted to as high as five and ten dollars... As a climax to the enthusiasm manifested and the apparent desire to help the Lawrence strikers, many of the men arose and offered to care for children of the strikers until an agreement is reached in Lawrence. In the majority of cases where such offers were made, it was voluntarily agreed that the expense of transporting the children from Lawrence will be met by the local people. It is proposed that such children as are suffering privation through the strike shall be housed and fed by Barre families until the labor difficulties are adjusted." A total of \$58 was collected on the spot and more was solicited.

⁴⁸ *Barre Daily Telegraph*, March 15, 1912. A crowd of more than 250 men and women gathered at the Barre Opera House to attend another mass meeting on behalf of the Lawrence strikers. They raised \$50 to send to the strikers in Lawrence. Those gathered heard remarks by: Fred W. Sutor, Secretary of the Quarryworkers' Union; Lena Morrow Lewis of San Francisco; and, Ugo Lupi of New York, "a member of the Lawrence strike committee and the man who introduced the resolution at a meeting of New York sympathizers to house and feed the Lawrence strikers' children until the labor difficulties are adjusted....After the mass meeting, Italian members of the gathering...appointed Antonio Broggi and A. Rossi to represent the Barre sympathizers at Lawrence in an effort to allow some of the strikers' children to come to this city for a time."

⁴⁹ Antonio Broggi and Teobaldo Rossi traveled from Barre to Lawrence to escort the group of thirty-five children to Vermont. The children who arrived in Barre ranged in age from four to fifteen. Each had a badge to wear with the words, "Lawrence girl" or "Lawrence boy." At the Socialist Hall they sat down to "a monstrous banquet.." At the Opera House, the Italian dramatic company presented Pietro Gorils play, "Honest People," in honor of the children. At just 35c per ticket, the event, which was presented in Italian, raised over \$100 to aid the strikers.

SOCIALIST LABOR PARTY HALL

United States Department of the Interior, National Park Service

National Register of Historic Places Registration Form

The help given to the mill families of Lawrence was a source of great pride to the Italian residents of Barre who had opened their homes to the hungry children of the factory workers. When the strike was settled on March 14, 1912 the children went home to their families. To celebrate the end of the strike, Socialist local No. 2 of the Italian Socialist Federation (SLP) invited a representative from the Lawrence strikers to its annual masquerade ball at the Barre Labor Hall. On behalf of the SLP members in Lawrence, Arturo Giovanitti conveyed the thanks of the workers of Lawrence for the support generated by the sympathizers of Barre.

Old Labor Hall 1936-1994

For reasons that are not clear, the Labor Hall was sold at auction by the sheriff in 1936 and passed into the hands of Sarkis Saliba, proprietor of the Washington Fruit Company. Saliba divided the large meeting hall into a cold storage facility by installing partitions. He lined the east quarter of the building with asphalt, cork and cement up to eight inches thick on walls, floor and ceiling. He installed compressors and an insulated door.

In the south quarter, Saliba lined the walls and ceiling with tongue-and-groove siding and installed hundreds of ceiling hooks for banana storage along with refrigeration units and gas lines for fumigants or ripening agents. The windows of the little refreshment stand were glassed-in and the room was made into an office. In later years, the original chandelier was taken down and a drop ceiling with florescent light fixtures was installed throughout the remainder of the meeting room. The new ceiling blocked access to a lead-lined compartment above the old refreshment stand. During recent renovation work, the compartment was reopened and found to contain party supplies and the historic glass raffle-bowl that had once been a feature of every social gathering at the hall.

Old Labor Hall 1995-present

Barre's Old Labor Hall was placed on the real estate market in early 1995 as a result of bankruptcy proceedings. A structural analysis by preservation architect Thomas Keefe on January 13, 1995, demonstrated that the Hall is quite sound, yet needs a total of about \$348,800 in repairs to return it to its original condition and bring back the era of its past glory.

When the Barre Historical Society launched a campaign to buy the building, ownership had passed jointly to the Granite Bank and the U.S. Small Business Administration. These groups gave first option to the Society to help preserve the building and set the purchase price at \$95,000.

With the support of the Barre Area Development Corporation, the Mayor, the City Council, the Washington County Legislative Delegation, the Granite Cutters' Association, the Mutuo Soccorso Society, the Northfield Savings Bank, the Vermont Housing and Conservation Fund, U.S. Senator Patrick J. Leahy and many other individuals and institutions, the Barre Historical Society secured title to the Hall in July 1995 through joint purchase with the City of Barre. Through the efforts of Eric Gradoia, a graduate student in the University of Vermont Historic Preservation Program, the Labor Hall was listed on the National Register of Historic Places, in September 1998.

SOCIALIST LABOR PARTY HALL

United States Department of the Interior, National Park Service

The Future of Barre's Old Labor Hall

In the near future, Barre's Old Labor Hall will reopen to the public as an interpretive site for heritage tourism and a partner with other cultural and historical organizations in Barre, throughout Vermont and across the nation. The effort to purchase and preserve this building has been inspired by the high ideals of the building's founders, who risked all in order to put into practice the philosophy of community in which they so fervently believed. When they visit Barre's Old Labor Hall, future generations of Americans and foreign visitors will become acquainted with these forgotten idealists and all that they wished to achieve in the green hills of rural Vermont.

SOCIALIST LABOR PARTY HALL

United States Department of the Interior, National Park Service

National Register of Historic Places Registration Form

Page 25**9. MAJOR BIBLIOGRAPHICAL REFERENCES**

Allen, Donald G., *Barre Granite Heritage with Guide to the Cemeteries*. Barre, Vermont: Friends of the Aldrich Library, 1997.

Atherton, Aurora Ambrosini, "Some Things I Remember About My Father," undated typescript. Archives of Barre History, Aldrich Public Library, Barre, Vermont.

Avrich, Paul. *Anarchist Portraits*. Princeton: Princeton University Press, 1988.

_____, *Sacco and Vanzetti: The Anarchist Background*. Princeton: Princeton University Press, 1991.

_____, Letter to National Park Service, January 16, 2000.

Bacon, Elisabeth Ramon, "Santander to Barre-- Life in a Spanish Family in Vermont." Barre, Vermont, 1988.

Banks, Ann, ed., *First Person America*. New York: Alfred A. Knopf, 1980.

Barre Evening Telegram, 1898-1902

Barre Daily Times, 1897; 1903-1959

Barre, Vermont. *Record of Meeting of the Co-operative Association of Consumption, Barre, Vermont*, Records of the City Clerk, July 5, 1912.

_____. *Articles of Association of the Co-operative Association of Consumption, Barre, Vermont*, Records of the City Clerk, November 6, 1901.

"Barre Ethnic Heritage Chronology" in *Barre, Vermont: An Ethnic Bouillabaisse*. Vermont Department of Education: Barre Ethnic Heritage Studies Project, 1978.

Barre in Retrospect II, 1776-1995. Barre, Vermont: Friends of the Aldrich Library, 1995.

Bertrand, Sidney Jeanne. *A Survey of Graniteville Branch #12 Quarry Workers Union, 1922-1941*. Unpublished M.A. thesis, University of Vermont, 1966.

Boston Herald Sunday Magazine, "The Anarchists of Barre, Vermont," March 12, 1905.

Brayley, Arthur W., *History of the Granite Industry of New England, Vol. II*. Boston, 1913.

Brommel, Bernard, *Eugene V. Debs: Spokesman for Labor and Socialism*. Chicago: Charles H. Kerr Publishing Co., 1978.

SOCIALIST LABOR PARTY HALL

United States Department of the Interior, National Park Service

National Register of Historic Places Registration Form

Buhle, Paul, Letter to National Park Service, n.d.

Buhle, Mari Jo, Paul Buhle and Dan Georgakas., eds., *Encyclopedia of the American Left*.
Urbana: University of Illinois Press, 1990.

Cannistraro, Philip V., Letter to National Park Service, January 12, 2000.

Calcagni, Charles P., "*A Sociological Study of the Religious Change Involving the Northern Italian in Barre, Vermont.*" Unpublished ms. Bates College, Maine, 1954.

Cianfarra, Camillo, "From New York to Barre (Notes from a Journey)," *Il Proletario*, Vol. 5,
No. 49., December 8, 1900.

Carlo Abate: A Life in Stone. Barre, Vermont: Aldrich Public Library, 1987.

Cerasoli, Mose, "Vermont Labor Agitator" interview by Bernard Sanders. *Labor History*, Vol.
15, No. 2, Spring 1974, pp. 261-270.

Collins, Ben, *Notes in Support of State and Federal Recognition of the Historical Significance of the "Old Labor Hall" at 46 Granite Street, Barre, Vermont*. Unpublished ms. Barre:
Barre Historical Society, April 30, 1975.

_____, "'Aiutol Asks Barre Historians Looking for Italian Newspapers," *Times Argus*,
March 14, 1976.

_____, "Barre's Labor Socialist Tradition has Deep Roots," *Times Argus*, Sunday,
September 4, 1977.

Colodny, Roby, "Labor in Barre: 1900-1941," in *Public Occurrence: A Vermont Magazine*.
Burlington, Vermont: Frayed Page Collective, 1976.

Cronaca Sovversiva, Luigi Galleani, ed., Published in Barre 1903-12; thereafter in Lynn,
Massachusetts until 1919.

Demers, Paul, *Labor and Social Relations of the Granite Industry of Barre*. Unpublished B.A.
thesis, Goddard College, 1974.

Derickson, Alan, "Criteria for Historic Landmarks of Extractive Labor in the United States,"
Draft essay for the National Historic Landmarks Theme study on American Labor. On
file, National Historic Landmarks Survey, Washington, DC., n.d.

Fenton, Edwin, *Immigrants and Unions: A Case Study: Italians and American Labor 1870-1920*.
New York: Arno Press, 1975.

Foner, Eric, Letter to National Park Service, January 15, 2000.

SOCIALIST LABOR PARTY HALL

United States Department of the Interior, National Park Service

National Register of Historic Places Registration Form

Gallagher, Dorothy, *All the Right Enemies: The Life and Murder of Carlo Tresca*. New Brunswick, New Jersey: Rutgers University Press, 1988.

Galleani, Luigi, *The End of Anarchism?* First Italian edition published in Newark, New Jersey, 1925. First English language edition published by Cienfuegos Press, Sanday, Orkney, U.K., 1982.

Gilbertson, Elsa, Letter to National Park Service, January 14, 2000.

Girard, Frank and Ben Perry, *The Socialist Labor Party 1876-1991: A Short History*. Philadelphia: Livra Books, 1991.

Goldman, Emma, *Living My Life, Vol. I*. Originally published, New York: Alfred A. Knopf, 1931. Reprinted New York: Dover Publications, 1970.

Gradoia, Eric, *Application for Recognition on the National Register of Historic Places for Barre's Old Labor Hall*. Burlington: University of Vermont, May 1998.

_____, *Existing Conditions and Finishes Analysis in Barre's Old Labor Hall, 46 Granite Street, Barre City, Vermont*. Burlington: University of Vermont, May 1998.

Green, Archie, Letter to National Park Service, January 11, 2000.

Hathaway, Richard O., "The Granite Workers of Barre, 1880-1940," in *We Vermonters: Perspectives on the Past*. Montpelier: Vermont Historical Society, 1992.

_____, Letter to National Park Service, January 14, 2000.

Hoerder, Dirk, ed., *The Immigrant Labor Press in North America, 1840s-1970s: An Annotated Bibliography. Vol. 3: Migrants from Southern and Western Europe*. New York: Greenwood Press, 1987.

Hooker, George Ellsworth, "Labor and Life at the Barre Granite Quarries: A Brief Survey of Social Conditions on Millstone Hill, Barre, Vermont, in the Autumn of 1895." Unpublished paper, 1895.

Iorizzo, Luciano J. and Salvatore Mondello, *The Italian-Americans*. Boston: Twayne Publishers, 1971.

Kornbluh, Joyce L., *Rebel Voices: An IWW Anthology*. Ann Arbor: University of Michigan Press, 1968.

Liveright, Peter, *Unionism and Labor Relations in the Granite Industry, Barre, Vermont*. Unpublished senior paper, Goddard College, 1943..

Labor History Theme Study: Phase III. Washington, DC: National Park Service, 1997

SOCIALIST LABOR PARTY HALL**Page 28**

United States Department of the Interior, National Park Service

National Register of Historic Places Registration Form

- Lane, Karen, "Old Labor Hall, Barre, Vermont," *Labor's Heritage*, Vol. 10, No. 3 (Spring/Summer 1999), pgs. 49-61.
- Lott, Jeffrey, *The Quarry Workers International Union in Barre, Vermont, 1922-1933*. Unpublished paper, Middlebury College, 1971.
- Painter 'Nell Irvin, *Standing at Armageddon: the United States, 1877-1919*. New York: W.W. Norton and Company, 1987.
- Pernicone, Nunzio, *Italian Anarchism, 1864-1892*. Princeton: Princeton University Press, 1993.
- Piccolini, Joseph, Interview recorded in Barre, October 20, 1997, concerning Piccolini's Bakery located behind the Labor Hall.
- Pironi, Peter, Correspondence with Ben Collins. 1974-75.
- Il Proletario*, Published in New York by the Socialist Labor Party, 1896-1921.
- Rea, Herbert E., *History of the Labor Situation in the Granite Sheds of Northfield and Vicinity*. Unpublished thesis, Norwich University, 1922.
- Reynolds, Robert D., Jr., Letter to National Park Service, January 14, 2000.
- Ristau, Arthur, *A Stonecutter*. Barre, Vermont: The Italian-American Memorial Committee, 1985.
- Rogers, Betty, producer, *The Blood of Barre: Portrait of the Granite Industry*. Windsor, Vermont: WVPR for National Public Radio, 1979.
- "Sacco-Vanzetti Case Recalled in Barre" in *Times Argus*, Wednesday, December 9, 1981.
- Sartwell, David, "Aspects of Barre History to 1940: A Preliminary Investigation," Unpublished paper, Goddard College, 1967.
- Sessions, Gene, ed., *Celebrating a Century of Granite Art*. Exhibit catalog published jointly by T.W. Wood Art Gallery at the Vermont College Arts Center & the Barre Museum at Aldrich Public Library, 1989.
- Skillin, Richard H., *The Socialist Party in Barre, Vermont*. Unpublished paper, Dec. 17, 1968.
- Slayton, F.C., "Vermont Quarrying," Vermont Writers Project, for Horace Davis "Living in New England," www.slatevalleymuseum.org/vtquarry.htm, (February 9, 2000), n.d.
- Socialist Labor Party, "Who Was Daniel De Leon?" *The People*, December 1, 1990.
- Stout, Neil R., Email to National Park Service, January 10, 2000.

SOCIALIST LABOR PARTY HALL

United States Department of the Interior, National Park Service

Page 29

National Register of Historic Places Registration Form

"Theme Study of Labor Landmarks" in *Labor's Heritage*, Vol. 6, No. 4. Silver Spring, MD: George Meany Center for Labor Studies, 1995.

Vecoli, Rudolph J., "Find, and Losing, The Gems of Barre's Italian Immigrant Past: Anarchism, Silicosis, and a Slip Of The Community Mind," in *Barre Daily Times*. Barre, Vermont: October 26, 1989.

_____, "'Free Country': the American Republic Viewed by the Italian Left, 1880-1920" *In the Shadow of the Statue of Liberty: Immigrants, Workers and Citizens in the American Republic, 1880-1920*. Paris: Presses Universitaires de Vincennes, 1988.

_____, "Luigi Galleani" in *Encyclopedia of the American Left* pp. 251-53.

_____, "'Primo Maggio' in the United States: An Invented Tradition of the Italian Anarchists" in *May Day Celebration*, Quaderni della Fondazione G. Brodolini. Venice: Marsilio Editori, 1988.

_____, "Primo Maggio: May Day Observances Among Italian Immigrant Workers, 1890-1920" in *Labor's Heritage*, Vol. 7, No. 4. Silver Spring, MD: George Meany Center for Labor Studies/ Spring 1996.

_____, Letter to National Park Service, January 5, 2000.

Previous documentation on file (NPS):

- ____ Preliminary Determination of Individual Listing (36 CFR 67) has been requested.
 Previously Listed in the National Register.
 ____ Previously Determined Eligible by the National Register.
 ____ Designated a National Historic Landmark.
 ____ Recorded by Historic American Buildings Survey: # _____
 ____ Recorded by Historic American Engineering Record: # _____

Primary Location of Additional Data:

- State Historic Preservation Office
 ____ Other State Agency
 ____ Federal Agency
 ____ Local Government
 ____ University
 Other (Specify Repository): Aldrich Public Library, Barre, Vermont

SOCIALIST LABOR PARTY HALL

United States Department of the Interior, National Park Service

National Register of Historic Places Registration Form

Page 30**10. GEOGRAPHICAL DATA**

Acreage of Property: Less than one acre

UTM References: Zone Easting Northing

A 18 699210 4896760

Verbal Boundary Description:

The SLP Hall sits at 46 Granite Street, and was formerly bordered by a small street, Zanleoni Place.

Boundary Justification:

The property comprises the Socialist Labor Party Hall and the half-acre parcel of land on which it has historically been seated.

SOCIALIST LABOR PARTY HALL

United States Department of the Interior, National Park Service

11. FORM PREPARED BY

Name/Title: Karen Lane/Librarian

Robin Bachin

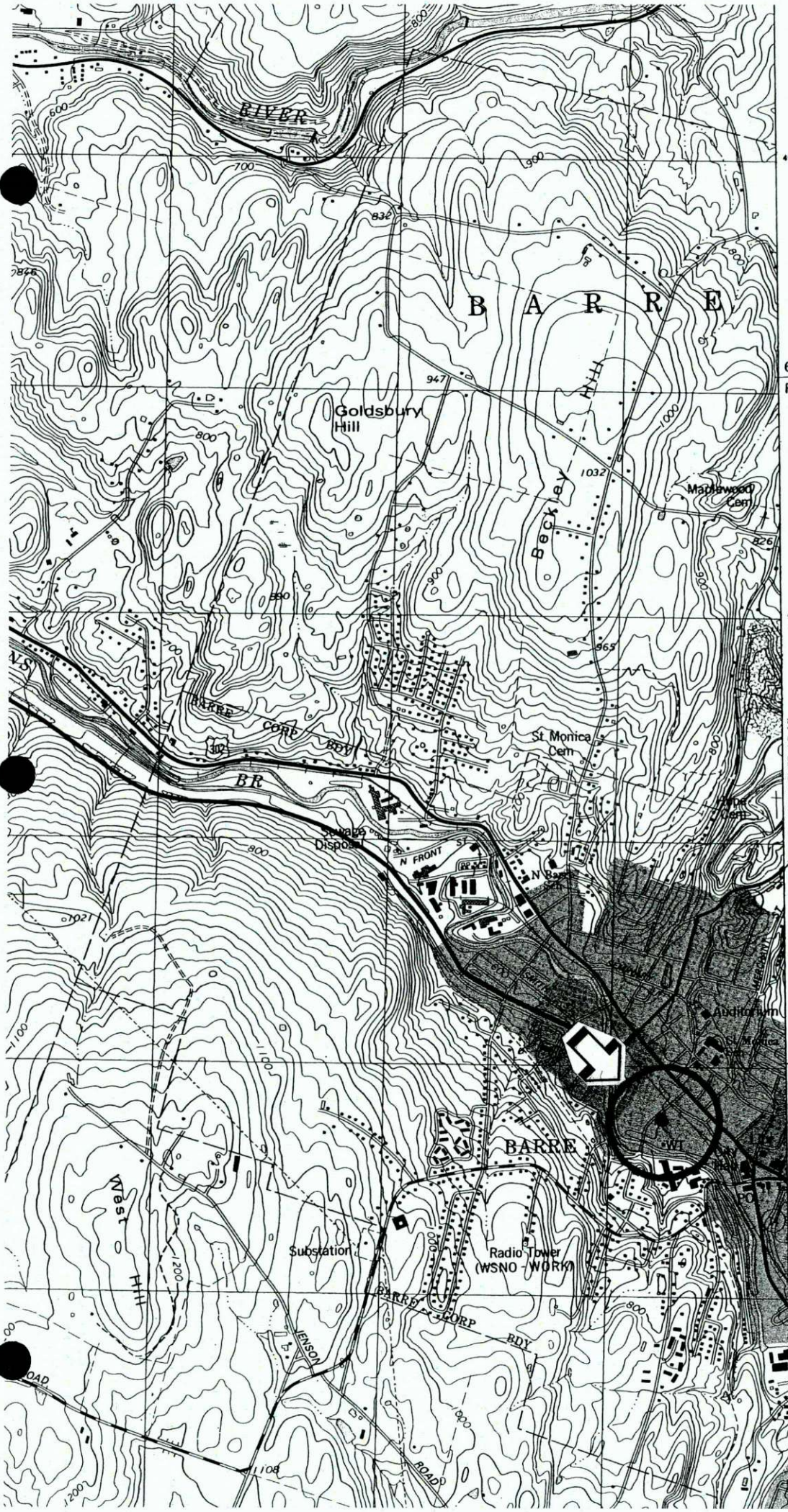
Charlton W. Tebeau Asst. Professor of
HistoryAddress: Aldrich Public Library
6 Washington Street
Barre, Vermont 05641University of Miami
P.O. Box 248107
Coral Gables, FL 33124

Telephone: 802-476-7550 ext. 307

305-284-4261

Date: May 1999

DESIGNATED A NATIONAL HISTORIC LANDMARK ON
May 16, 2000



4901

630 000
FEET

4999

12°30'

SOCIALIST PARTY HALL
Barre, Washington County, Vermont

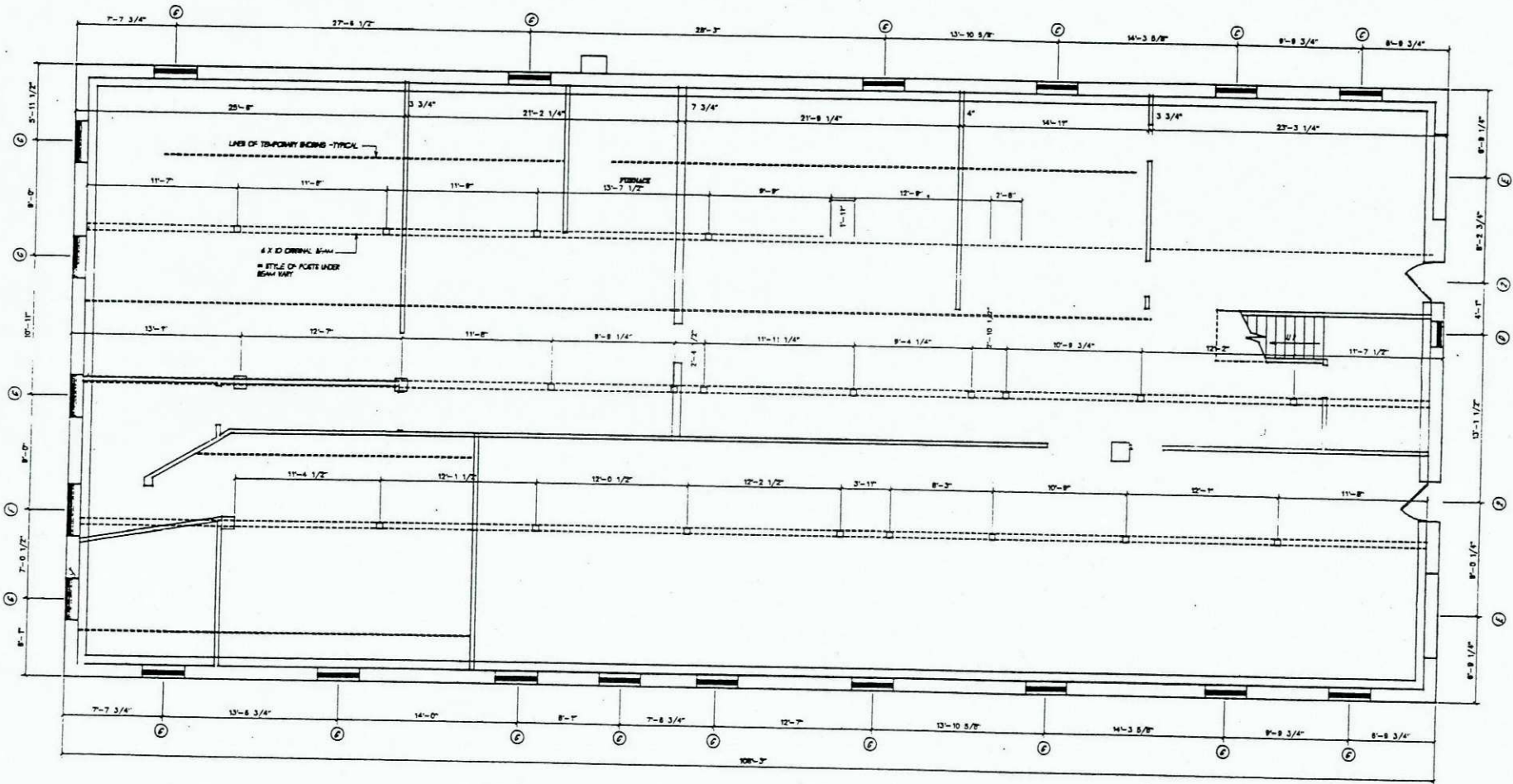
UTM References

Zone	18
Easting	699210
Northing	4896760



EAST BARRE 3.6 MI.
WOODSVILLE, N. H. 32 MI.

(BARRE EAST)
6572 III NW

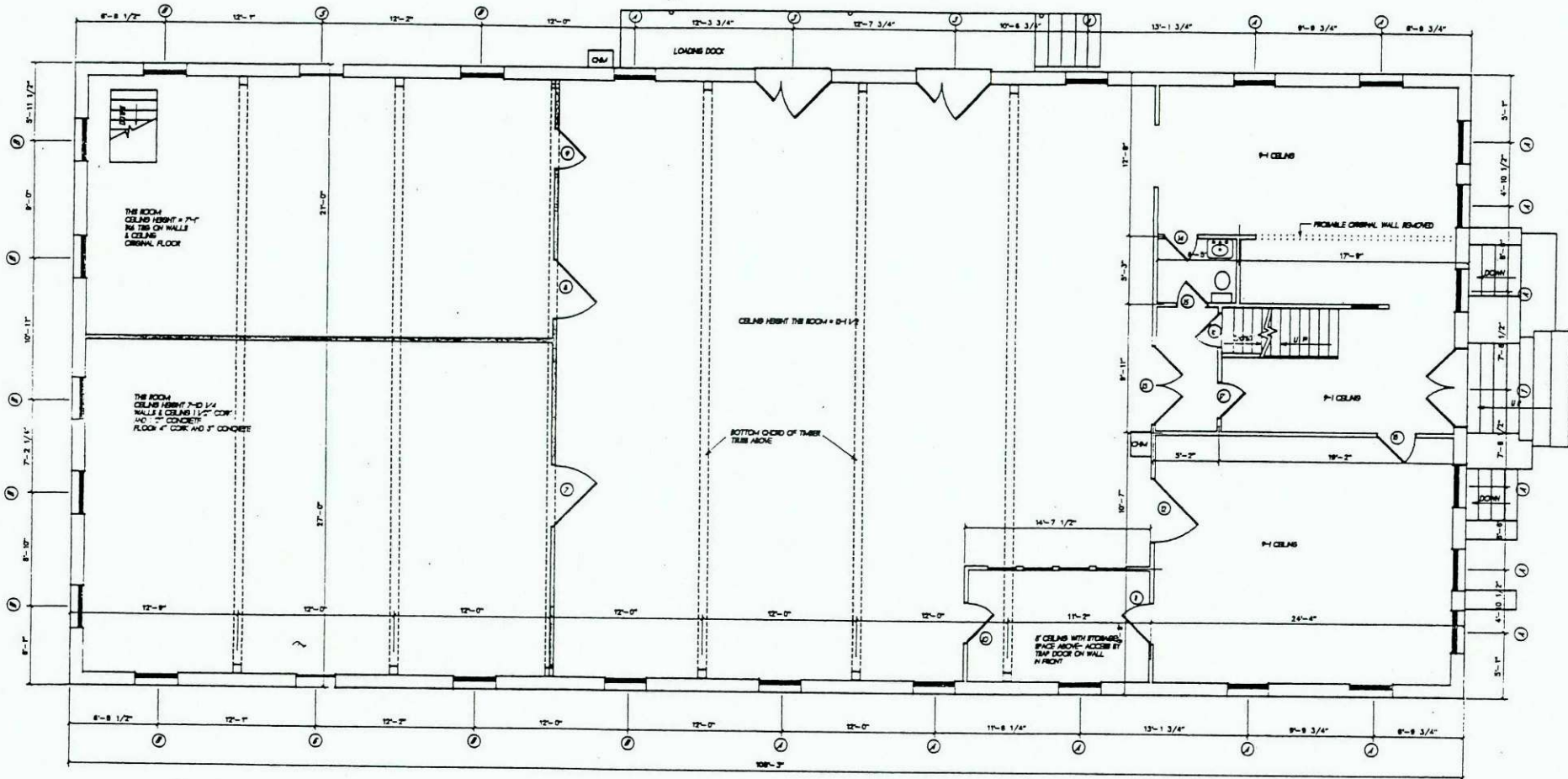


BHS
OLD LABOR
HALL

A-1

BASEMENT FLOOR PLAN

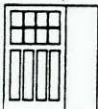
SCALE: 1/4" = 1'-0"



STANDARD
BASEMENT



FLAT-TOP



DOOR # 3



DOOR # 4



2-PANEL DOOR



DOOR # 8

SYMBOL	WINDOWS
A	STANDARD HIGH-TOP WINDOW - 33 1/4" X 23 3/4" SHH
B	STANDARD WINDOW OPENING BROCK IN
C	STANDARD BASEMENT - 33 1/2" X 33 1/2" PLURE SHH
D	34" X 24" KICKER BASEMENT - FL-TWOOD COVER
E	LARGE HIGH-TOP BASEMENT IN FRONT - BROCK IN
F	SQUARE BASEMENT IN BACK - FL-TWOOD COVER
G	STANDARD BASEMENT - FL-TWOOD COVER

PROBABLE ORIGINAL WALLS

WALLS ADDED LATER

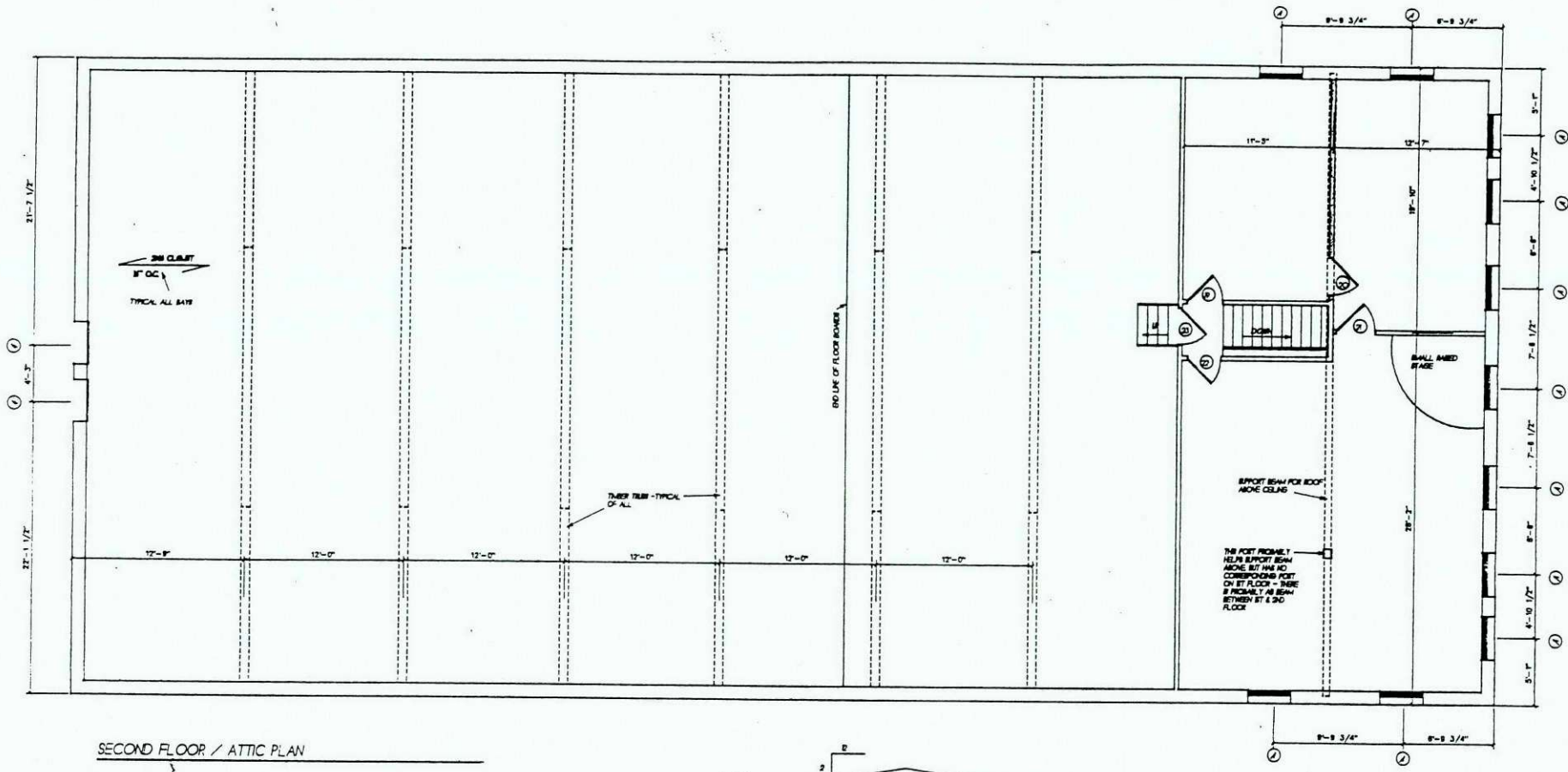
SYMBOL	DOORS
1	6'-0" X 6'-0" - 8" HORIZONTAL PANEL
2	3'-0" X 7'-0" FL-TWOOD
3	6'-0" X 7'-0" 4'-0" PANEL/BLADE 3'-0" FLAT PANEL
4	OPENING CLOSED WITH FL-TWOOD - APPROX 30"
5	OPENING CLOSED WITH FL-TWOOD - APPROX 30"
6	OPENING BROCK CLOSED - APPROX 30"
7	4'-7" X 7'-0" REPRESENTOR DOOR
8	4'-5" X 6'-0" HORIZONTAL
9	3'-0" X 6'-0" 4" HORIZONTAL PANEL
10	2'-8" X 6'-0" FLUSH LAWN
11	2'-0" X 6'-0" 8" PANEL
12	1'-6" X 6'-0" 8" PANEL
13	6'-0" X 6'-0" 8" PANEL
14	2'-8" X 6'-0" 8" PANEL
15	2'-8" X 6'-0" 8" PANEL

SYMBOL	DOORS
16	2'-8" X 6'-0" 8" PANEL
17	2'-8" X 6'-0" FLUSH LAWN
18	2'-0" X 6'-0" HORIZONTAL PANEL W/ BLADE
19	2'-8" X 6'-0" FLUSH BROCK
20	2'-0" X 6'-0" FLUSH LAWN
21	2'-0" X 6'-0" FLUSH LAWN
22	2'-8" X 6'-0" FLUSH LAWN
23	2'-8" X 6'-0" 8" PANEL
24	3'-0" X 7'-0" FL-TWOOD
25	3'-0" X 7'-0" FL-TWOOD

FIRST FLOOR PLAN SCALE: 1/4" = 1'-0"

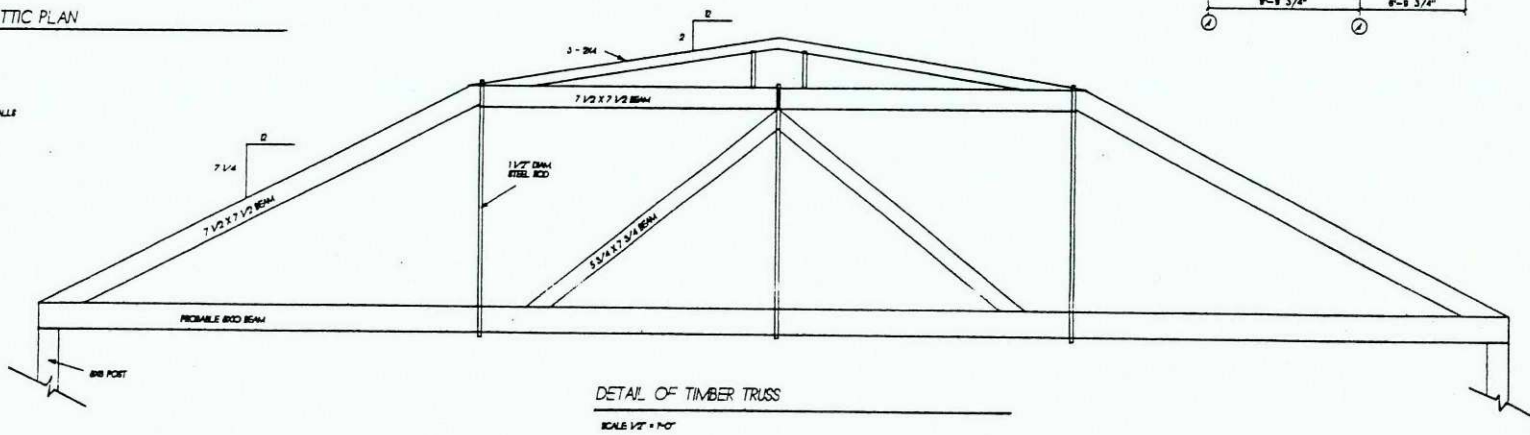
BHS
OLD LABOR
HALL

A-2



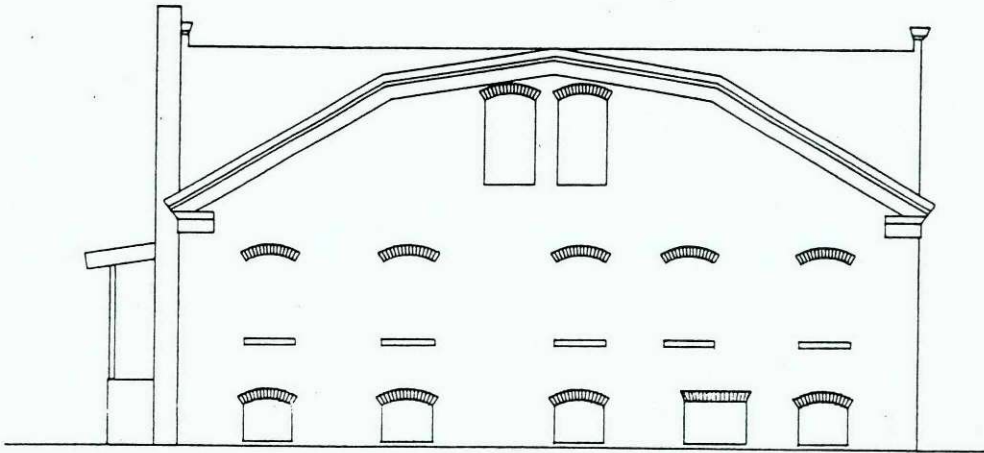
SECOND FLOOR / ATTIC PLAN

===== PROMBLE ORIGINAL WALLS
 - - - - - WALLS ADDED LATER

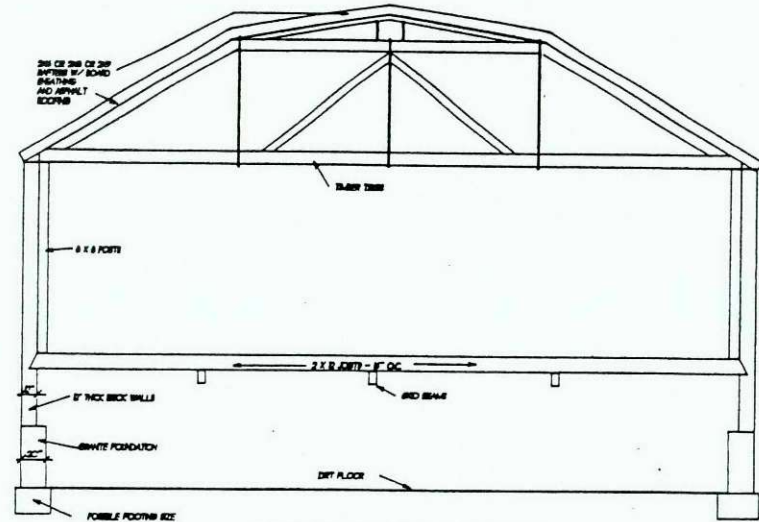


DETAIL OF TIMBER TRUSS
 SCALE 1/2" = 1'-0"

BHS
 OLD LABOR
 HALL
 SECOND FLOOR PLAN
 SCALE: 1/4" = 1'-0"



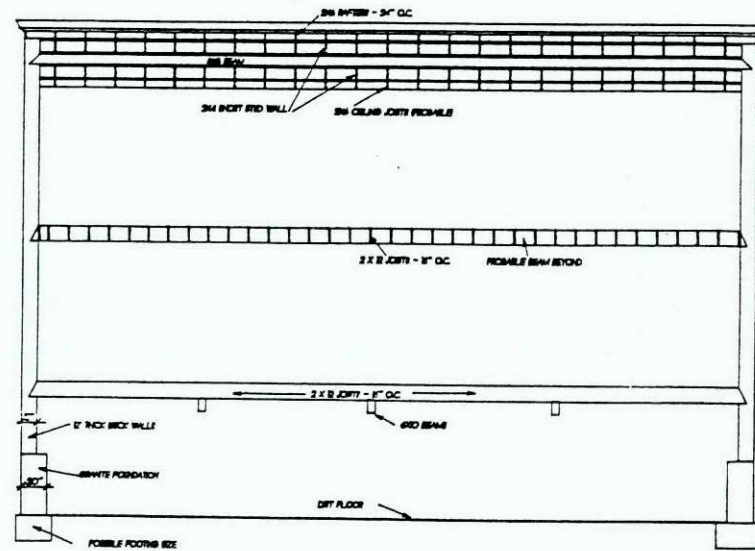
BACK ELEVATION



TYPICAL CUT THRU 1 1/2 STORY SECTION



FRONT ELEVATION



TYPICAL CUT THRU 2-STORY SECTION

SCALE: 1/4" = 1'-0"

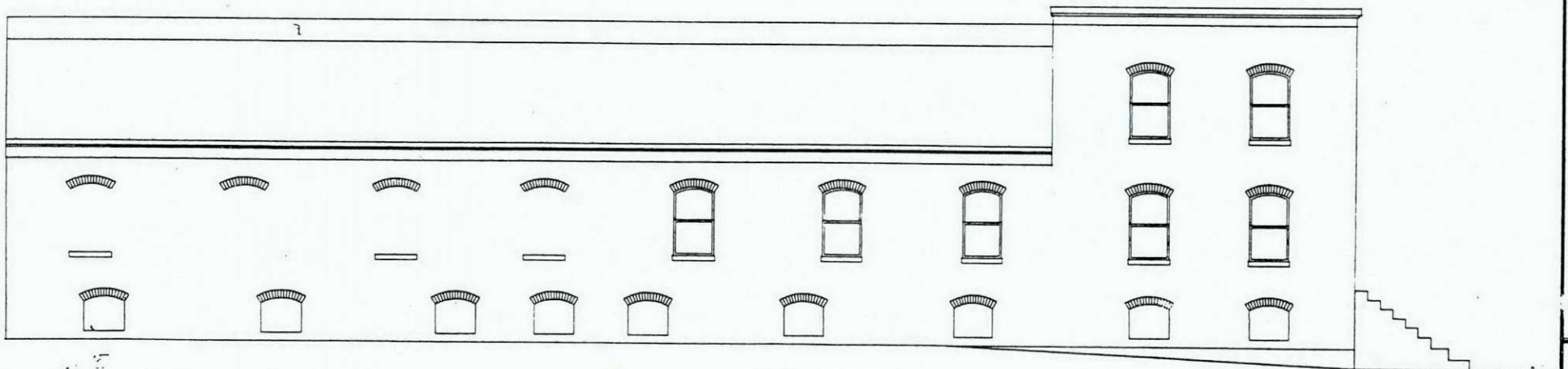
FRONT & BACK ELEVATIONS - SECTIONS

BHS
OLD LABOR
HALL

A-51



RIGHT ELEVATION



LEFT ELEVATION

SC-E: 1/4

RIGHT & LEFT ELEVATIONS

BHS
OLD LABOR
HALL

A-4



Figure 1
SOCIALIST LABOR PARTY HALL
Barre, Washington County, Vermont
Front and south side, facing northeast
Photographer: Robin Bachin
August 1995

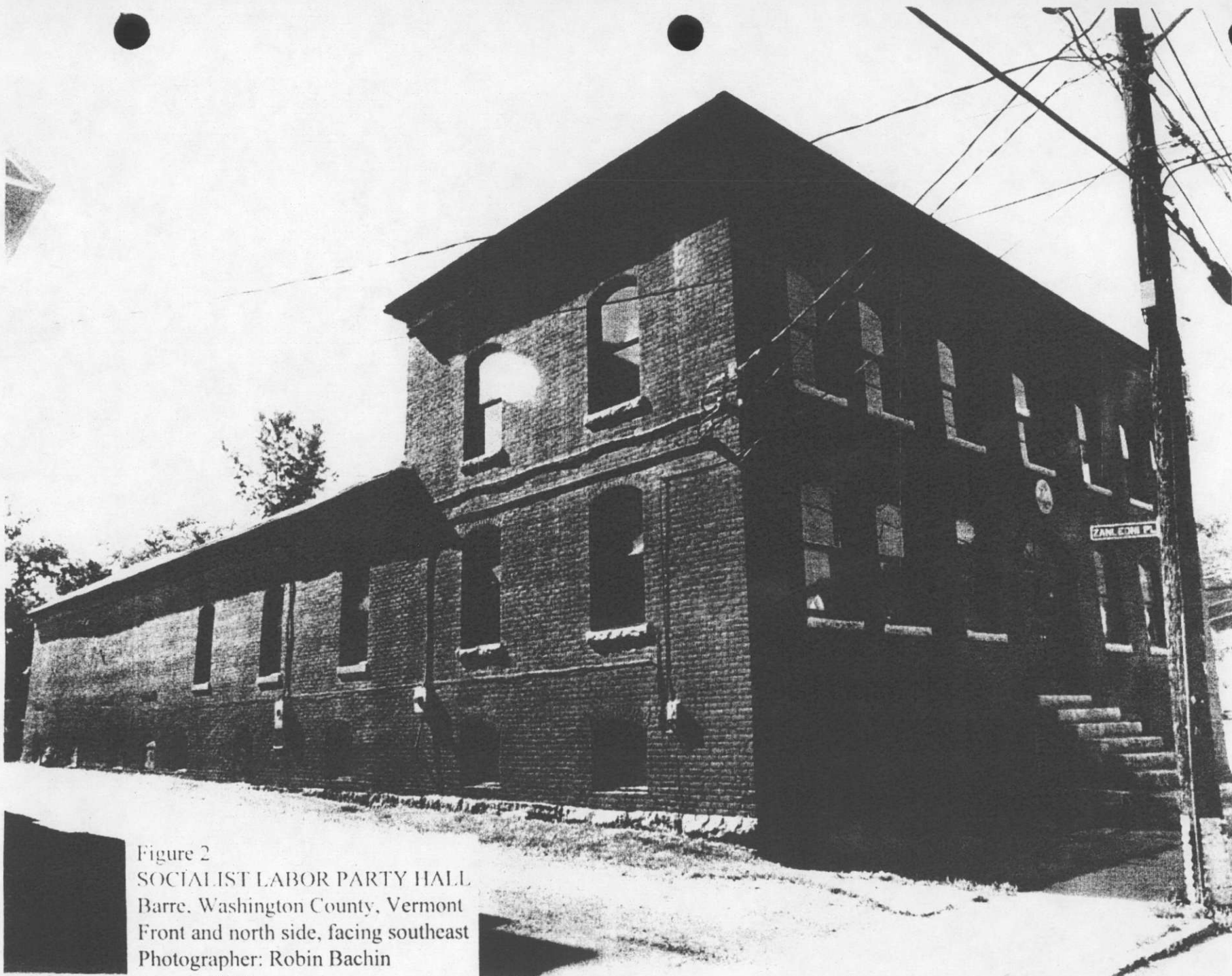


Figure 2
SOCIALIST LABOR PARTY HALL
Barre, Washington County, Vermont
Front and north side, facing southeast
Photographer: Robin Bachin
August 1995



Figure 3
SOCIALIST LABOR PARTY HALL
Barre, Washington County, Vermont
Front, facing east
Photographer: Robin Bachin
August 1995

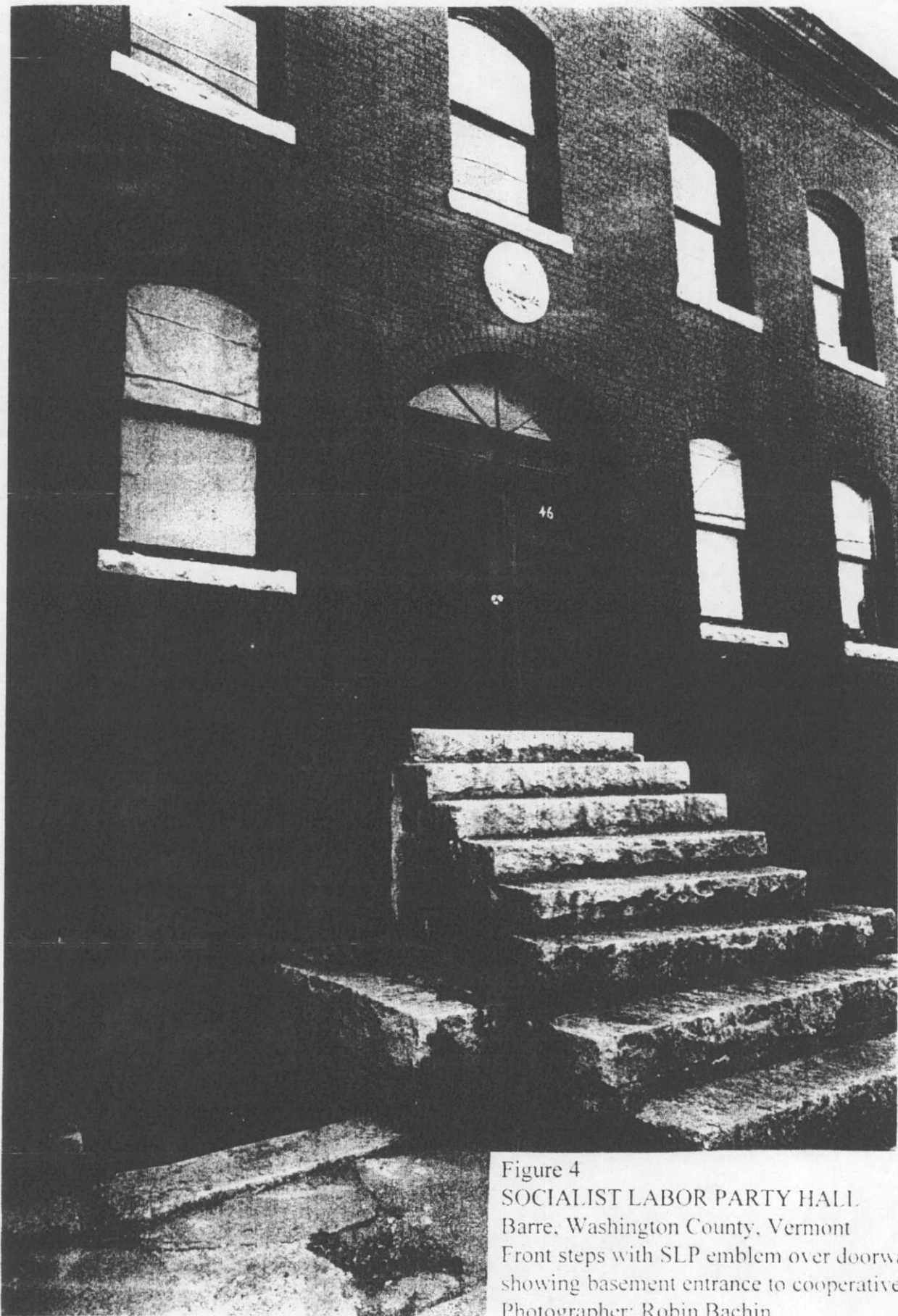


Figure 4
SOCIALIST LABOR PARTY HALL
Barre, Washington County, Vermont
Front steps with SLP emblem over doorway and
showing basement entrance to cooperative store
Photographer: Robin Bachin
August 1995

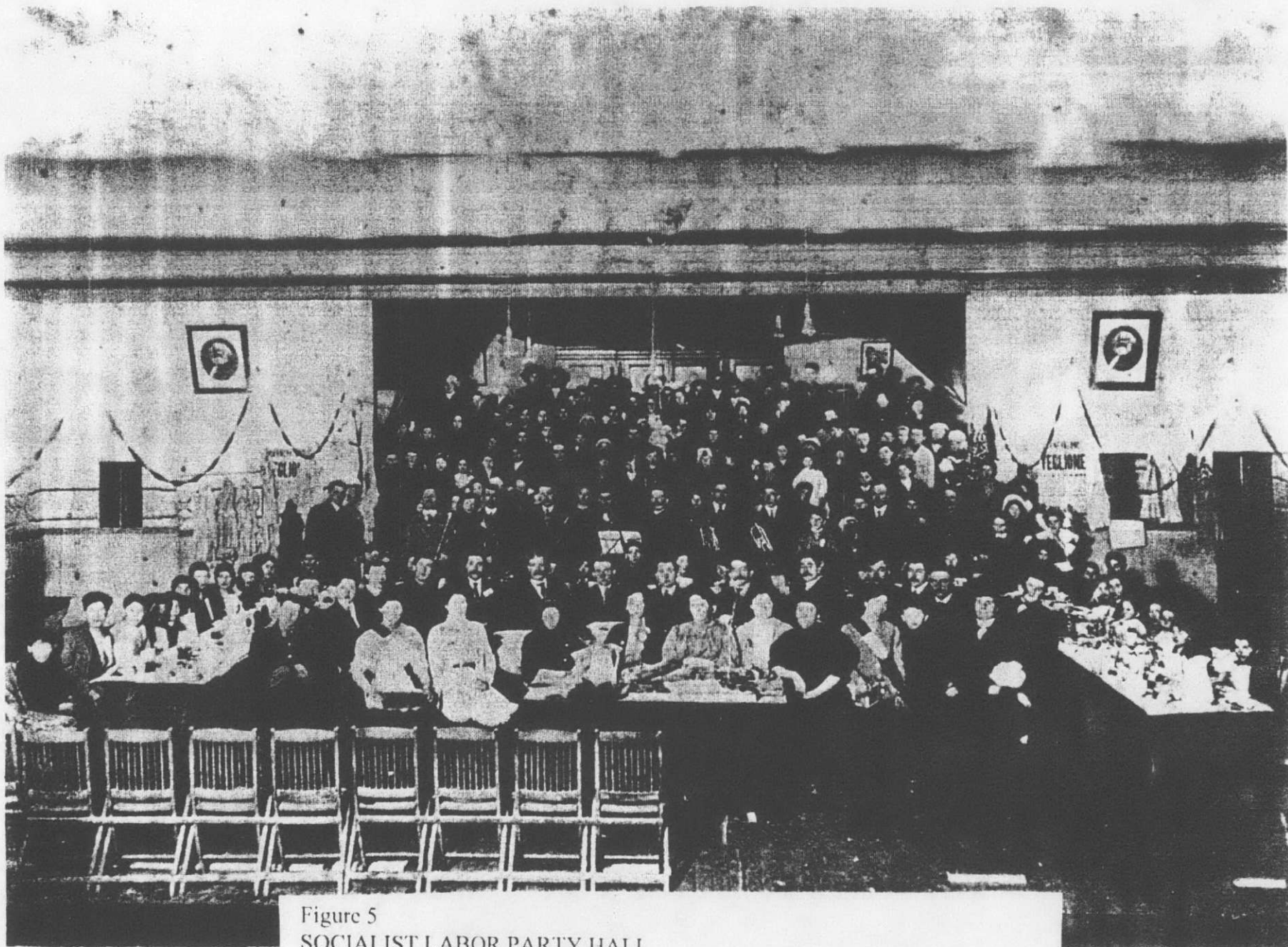


Figure 5
SOCIALIST LABOR PARTY HALL
Barre, Washington County, Vermont
Interior of SLP Hall, banquet held for striking Lawrence, Massachusetts workers
Aldrich Public Library
1912



Figure 6
SOCIALIST LABOR PARTY HALL
Barre, Washington County, Vermont
Children of striking workers from Lawrence, Massachusetts at SLP Hall
Aldrich Public Library
February 12, 1912



Primo Maggio 1904

Figure 7
SOCIALIST LABOR PARTY HALL,
Barre, Washington County, Vermont
Celebrating Primo Maggio, 1904 at the SLP Hall
Aldrich Public Library
1904